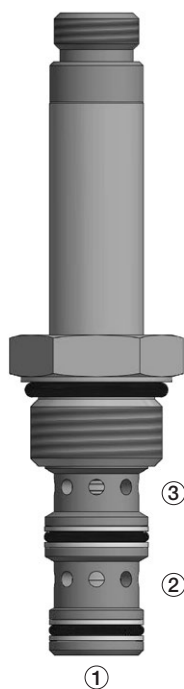
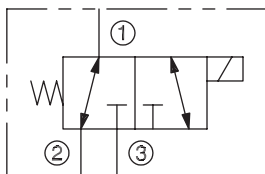


DSV2-100-3

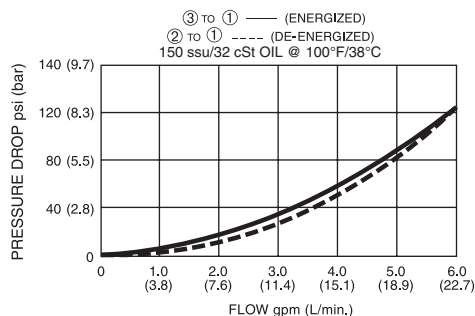
Three-Way, Two-Position,
Spool-Type Solenoid Valve



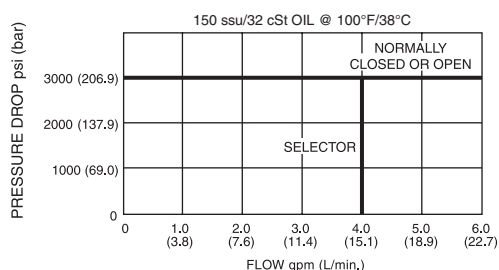
SERIES 10



PRESSURE DROP VS. FLOW



PERFORMANCE CHARACTERISTIC



DESCRIPTION

A cartridge valve designed as a three-way, spool-type, directional control valve.

OPERATION

When de-energized, the DSV2-100-3 allows flow between ② and ①, while blocking flow at ③.

When energized, the cartridge's spool shifts to allow flow between ① and ③ while blocking flow at ②.

Operation of Manual Override Option: To override, push button in, twist counterclockwise and release. In this position, valve will remain detented in the shifted condition.

To return to normal operation, push button in, twist clockwise and release. Override will be detented in this position.

FEATURES and BENEFITS

- Continuous-duty solenoid.
- Hardened precision spool and sleeve for long life.
- Efficient wet-armature construction.
- Cartridges are voltage interchangeable.
- Optional coil voltages and terminations.
- Manual override option.
- Industry common cavity.

SPECIFICATIONS

Operating Pressure: 3000 PSI (207 Bar)

Flow: See PERFORMANCE CHARACTERISTIC graph.

Internal Leakage: (Per land) 5 in.³/min. (82 cc/min.) max.
at 3000 PSI (207 Bar)

Temperature: -30° F to +250° F (-35°C to +120° C)

Coil Rating: Continuous from 85% to 110% of rated voltage.

Current Draw: 12 VDC is 1.8 amps.

Minimum Pull-In Voltage: 85% of rated voltage at 3000 PSI (207 Bar)

Response Time: 80% of final change of state with 100% voltage
supplied at 80% of nominal flow rating.

Pull-In: 12 VDC 95 m. sec. **Drop-Out:** 12 VDC 80 m. sec.

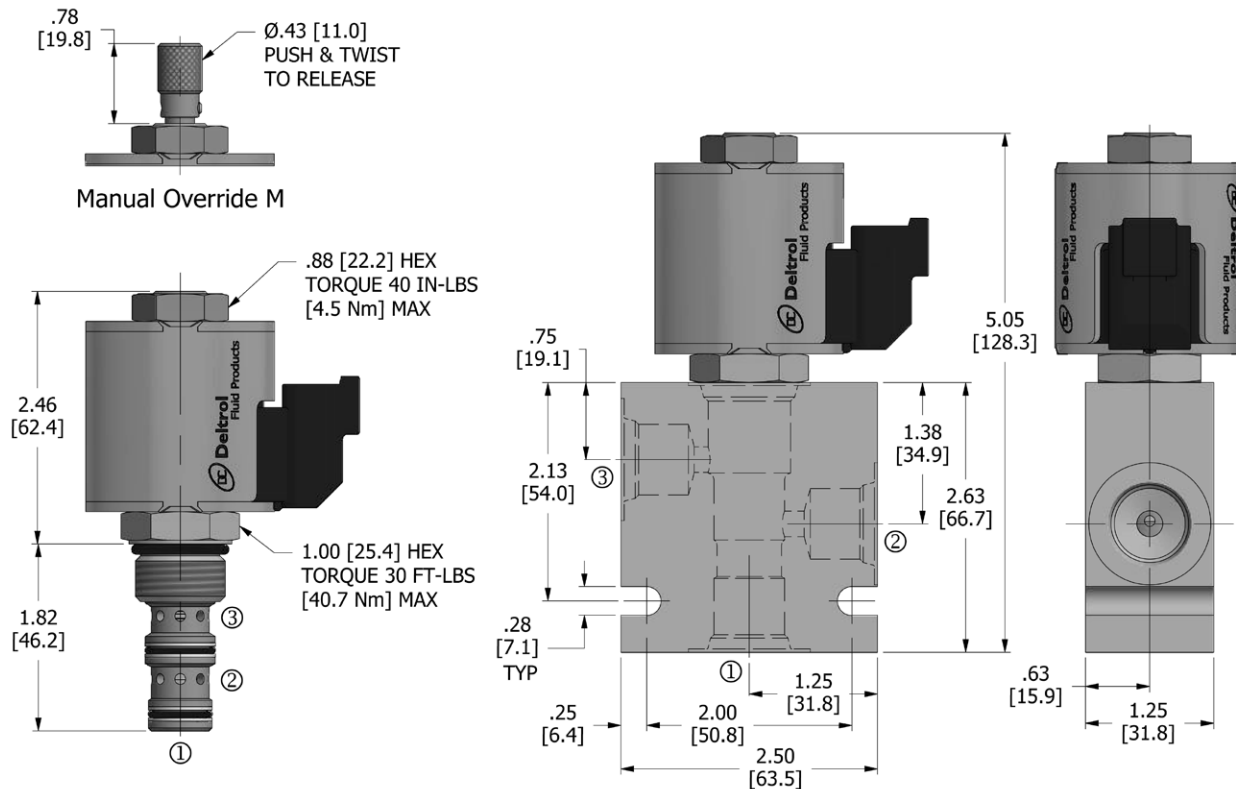
Recommended Filtration: ISO 17/15/13

Fluids: Mineral-based fluids. For other fluid compatibility consult factory.

Cavity/Cavity Tool: 100-3, see page 11.10.3

In-Line Body Material: Anodized 6061T6 aluminum
alloy rated at 3000 PSI (207 Bar).

DIMENSIONS Inches [Millimeters]



HOW TO ORDER

DSV2	-	100	-	3	-	*	-	*	-	**	**	-	**
Solenoid Valve		Cavity		Flow Path		Seals		Manual Override		Voltage	Termination		Porting

Seals		Seal Kit
N	Buna N	
V	Viton	

Manual Override	
omit	No manual override
M	Manual override

Voltage†	
omit	Cartridge only w/nut
D1	DC 12 Volt
D2	DC 24 Volt
D9	DC 20 Volt
D10	DC 10 Volt
A5	AC 120 Volt
A6	AC 240 Volt

Termination†	
omit	Cartridge only w/nut
DE	Double Lead
SE	Single Lead
HS	Hirschmann®
BE	Double Spade
EE	Single Stud
UE	Deutsch
PE	Metri-Pack
JE	Amp Junior Timer

Porting†		In-Line Body w/o Cartridge
omit	Cartridge only w/nut	
2N	1/4 PTF	B-100-3-2N
3N	3/8 PTF	B-100-3-3N
6T	SAE 6	B-100-3-6T
8T	SAE 8	B-100-3-8T

† Other options available – consult factory

All variations may not be configurable. Minimum order quantities may be required on other models. Contact Deltrol Fluid Products for complete details.