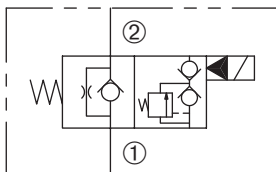


DSV2-100-2NOP

Normally-Open, Two-Way, Two-Position,
Poppet-Type Solenoid Valve



SERIES 10



DESCRIPTION

A cartridge valve designed with positive shut off to be used in load holding applications.

OPERATION

When de-energized, the DSV2-100-2NOP poppet is open to allow flow from ② to ①.

When energized, the poppet closes to block flow from ② to ①. In this condition, the cartridge allows reverse flow from ① to ② after overcoming the solenoid force - 50 PSI (3 Bar).

FEATURES and BENEFITS

- Continuous-duty solenoid.
- Hardened poppet and plunger for long life and low leakage.
- Efficient wet-armature construction.
- Cartridges are voltage interchangeable.
- Optional coil voltages and terminations.
- Filter screen standard.
- Industry common cavity.

SPECIFICATIONS

Operating Pressure: 3000 PSI (207 Bar)

Flow: See PRESSURE DROP VS. FLOW graph.

Internal Leakage: 5 drops/min. max. at 3000 PSI (207 Bar)

Temperature: -30° F to +250° F (-35°C to +120° C)

Coil Rating: Continuous from 85% to 110% of rated voltage.

Current Draw: 12 VDC is 1.8 amps.

Minimum Pull-In Voltage: 85% of rated voltage at 3000 PSI (207 Bar)

Response Time: 80% of final change of state with 100% voltage supplied at 100% of nominal flow rating.

Pull-In: 12 VDC 25 m. sec. **Drop-Out:** 12 VDC 30 m. sec.

Recommended Filtration: Critical Application-ISO 17/15/13

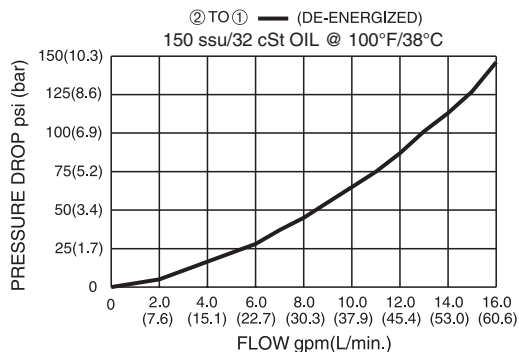
Non-Critical Application-ISO 20/18/14

Fluids: Mineral-based fluids. For other fluid compatibility consult factory.

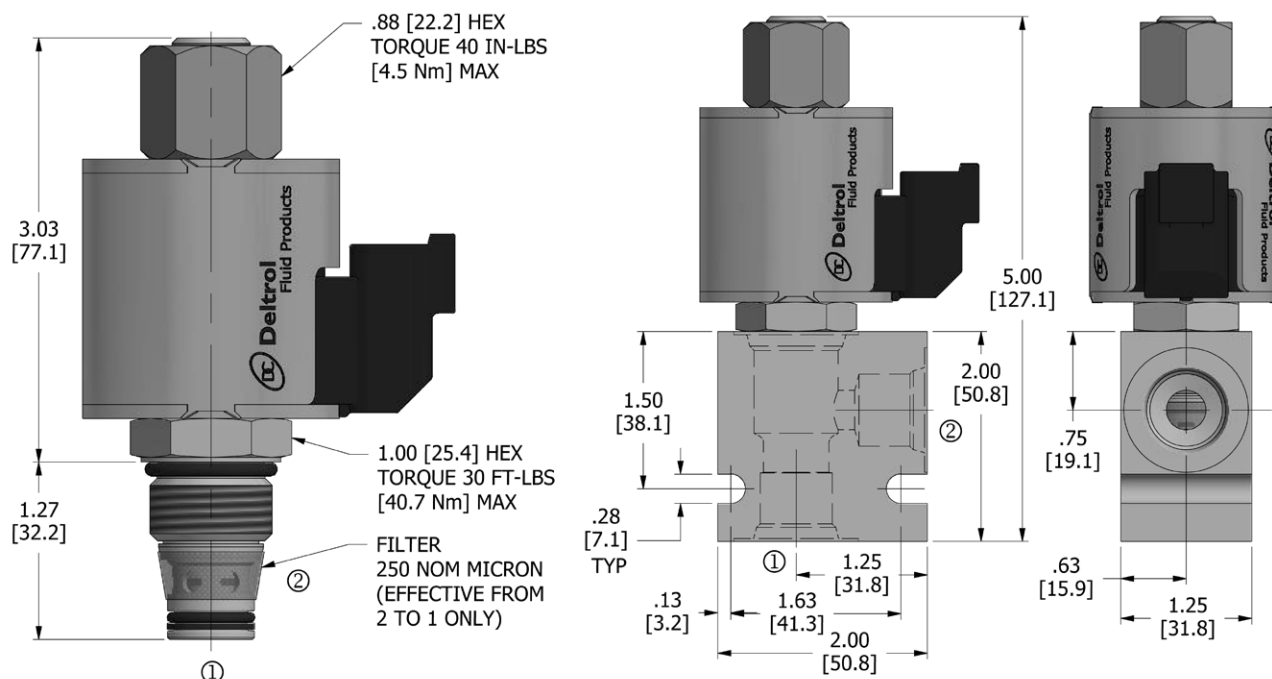
Cavity/Cavity Tool: 100-2, see page 11.10.2

In-Line Body Material: Anodized 6061T6 aluminum alloy rated at 3000 PSI (207 Bar).

PRESSURE DROP VS. FLOW



DIMENSIONS Inches [Millimeters]



HOW TO ORDER

DSV2 - **100** - **2** **NO** **P** - ***** - ****** ****** - ******

Solenoid Valve Cavity Flow Path Normally Open Poppet Seals Voltage Termination Porting

Seals		Seal Kit
N	Buna N	DSK-100-2-N-A
V	Viton	DSK-100-2-V-A

Voltage [†]	
omit	Cartridge only w/nut
D1	DC 12 Volt
D2	DC 24 Volt
D9	DC 20 Volt
D10	DC 10 Volt
A5	AC 120 Volt
A6	AC 240 Volt

Termination [†]	
omit	Cartridge only w/nut
DE	Double Lead
SE	Single Lead
HS	Hirschmann®
BE	Double Spade
EE	Single Stud
UE	Deutsch
PE	Metri-Pack
JE	Amp Junior Timer

Porting [†]		In-Line Body w/o Cartridge
omit	Cartridge only w/nut	
2N	1/4 PTF	B-100-2-2N
3N	3/8 PTF	B-100-2-3N
6T	SAE 6	B-100-2-6T
8T	SAE 8	B-100-2-8T

[†] Other options available – consult factory

All variations may not be configurable. Minimum order quantities may be required on other models. Contact Deltrol Fluid Products for complete details.