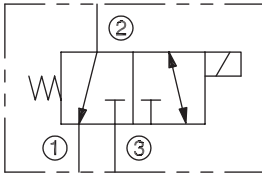


# DSV2-080-3B

Three-Way, Two-Position,  
Spool-Type Solenoid Valve



## SERIES 8



## DESCRIPTION

A cartridge valve designed as a three-way, spool-type, directional control valve.

## OPERATION

When de-energized, the DSV-080-3B allows flow from ② to ①, while blocking flow at ③.

When energized, the cartridge's spool shifts to allow flow between ② and ③ while blocking flow at ①.

**Operation of Manual Override Option:** To override, push button in to activate. To return to normal valve function, release button.

## FEATURES and BENEFITS

- Continuous-duty solenoid.
- Hardened precision spool and sleeve for long life.
- Efficient wet-armature construction.
- Cartridges are voltage interchangeable.
- Optional coil voltages and terminations.
- Manual override option.
- Industry common cavity.

## SPECIFICATIONS

**Operating Pressure:** 3000 PSI (207 Bar)

**Flow:** See PERFORMANCE CHARACTERISTIC graph.

**Internal Leakage:** (Per land) 5 in.<sup>3</sup>/min. (82 cc/min.) max. at 3000 PSI (207 Bar)

**Temperature:** -30°F to +250°F (-35°C to +120°C)

**Coil Rating:** Continuous from 85% to 110% of rated voltage.

**Current Draw:** 12 VDC is 1.3 amps.

**Minimum Pull-In Voltage:** 85% of rated voltage at 3000 PSI (207 Bar)

**Response Time:** 80% of final change of state with 100% voltage supplied at 100% of nominal flow rating.

**Pull-In:** 12 VDC 45 m. sec. **Drop-Out:** 12 VDC 57 m. sec.

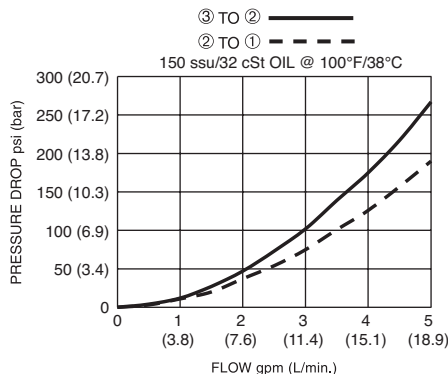
**Recommended Filtration:** ISO 17/15/13

**Fluids:** Mineral-based fluids. For other fluid compatibility, consult factory.

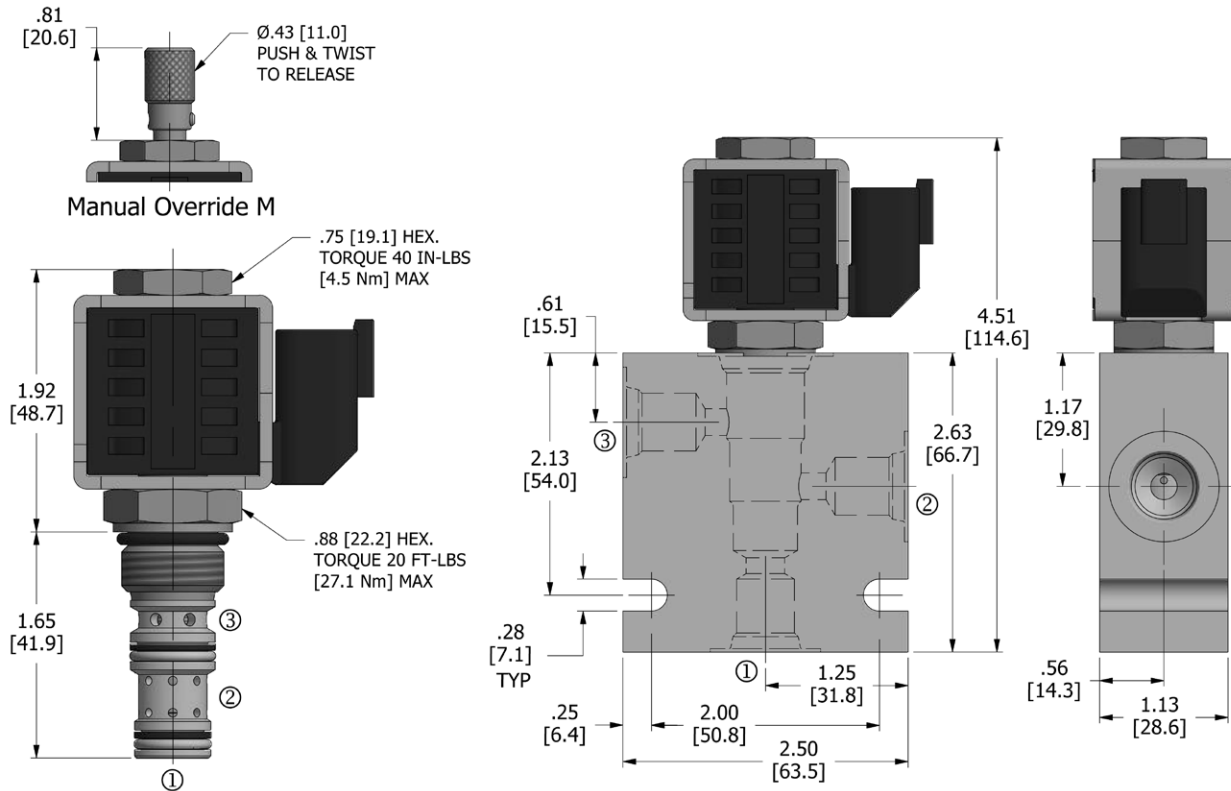
**Cavity/Cavity Tool:** 080-3, see page 11.08.3

**In-Line Body Material:** Anodized 6061T6 aluminum alloy rated at 3000 PSI (207 Bar).

## PRESSURE DROP VS. FLOW



## DIMENSIONS Inches [Millimeters]



## HOW TO ORDER

<b>DSV2</b>	-	<b>080</b>	-	<b>3B</b>	-	<b>*</b>	-	<b>*</b>	-	<b>**</b>	<b>**</b>	-	<b>**</b>
Solenoid Valve		Cavity		Flow Path		Seals		Manual Override		Voltage	Termination		Porting

Seals		Seal Kit
<b>N</b>	Buna N	
<b>V</b>	Viton	

Manual Override	
omit	No manual override
<b>M</b>	Manual override

Voltage†	
omit	Cartridge only w/nut
<b>D1</b>	DC 12 Volt
<b>D2</b>	DC 24 Volt
<b>D9</b>	DC 20 Volt
<b>D10</b>	DC 10 Volt
<b>A5</b>	AC 120 Volt
<b>A6</b>	AC 240 Volt

Termination†	
omit	Cartridge only w/nut
<b>DE</b>	Double Lead
<b>SE</b>	Single Lead
<b>HS</b>	Hirschmann®
<b>CS</b>	Conduit
<b>BE</b>	Double Spade
<b>EE</b>	Single Stud
<b>UE</b>	Deutsch
<b>PE</b>	Metri-Pack
<b>JE</b>	Amp Junior Timer

Porting†		In-Line Body w/o Cartridge
omit	Cartridge only w/nut	
<b>2N</b>	1/4 PTF	B-080-3-2N
<b>3N</b>	3/8 PTF	B-080-3-3N
<b>4T</b>	SAE 4	B-080-3-4T
<b>6T</b>	SAE 6	B-080-3-6T

† Other options available – consult factory

All variations may not be configurable. Minimum order quantities may be required on other models. Contact Deltrol Fluid Products for complete details.