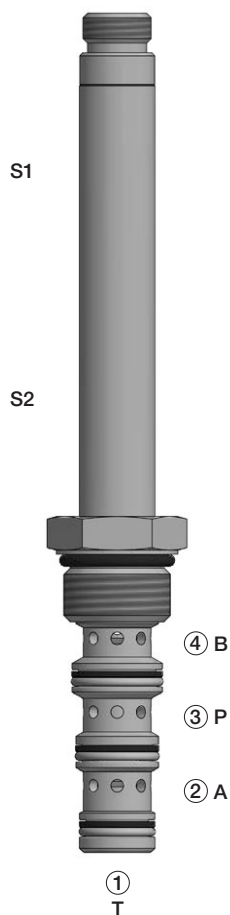
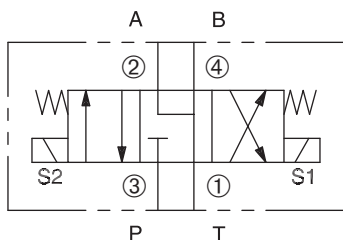


# DSV-100-34M

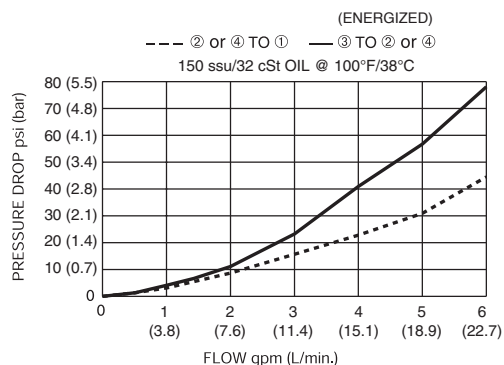
Four-Way, Three-Position, Motor Center  
Spool-Type Solenoid Valve



## SERIES 10



## PRESSURE DROP VS. FLOW



## DESCRIPTION

A cartridge valve designed as a three position, four-way solenoid valve.

## OPERATION

When de-energized, the valve allows flow between the ①, ②, and ④ ports with the ③ port blocked. When the upper solenoid (S1) is energized, the valve allows flow between ② and ① ports and the ③ and ④ ports. When the lower solenoid (S2) is energized, the valve allows flow between the ④ and ① ports and the ③ and ② ports.

**Operation of Manual Override Option:** To override, pull the knurled knob to activate the coil “S1” function, or push the knurled knob to activate the coil “S2” function. Release the knurled knob to return the center position.

## FEATURES and BENEFITS

- Continuous-duty solenoid.
- Hardened precision spool and sleeve for long life.
- Efficient wet-armature construction.
- Cartridges are voltage interchangeable.
- Optional coil voltages and terminations.
- Industry common cavity.

## SPECIFICATIONS

**Operating Pressure:** 3000 PSI (207 Bar)

**Flow:** See PRESSURE DROP VS. FLOW CURVE.

Nominal flow 6 gpm (22.7 L/min.)

**Internal Leakage:** (Per land) 10 cu in./min. max. (164 cc/min.)  
at 3000 PSI (207 Bar)

**Temperature:** -30°F to +250°F (-35°C to +120°C)

**Coil Rating:** Continuous from 85% to 110% of rated voltage.

**Current Draw:** 12 VDC is 1.8 amps.

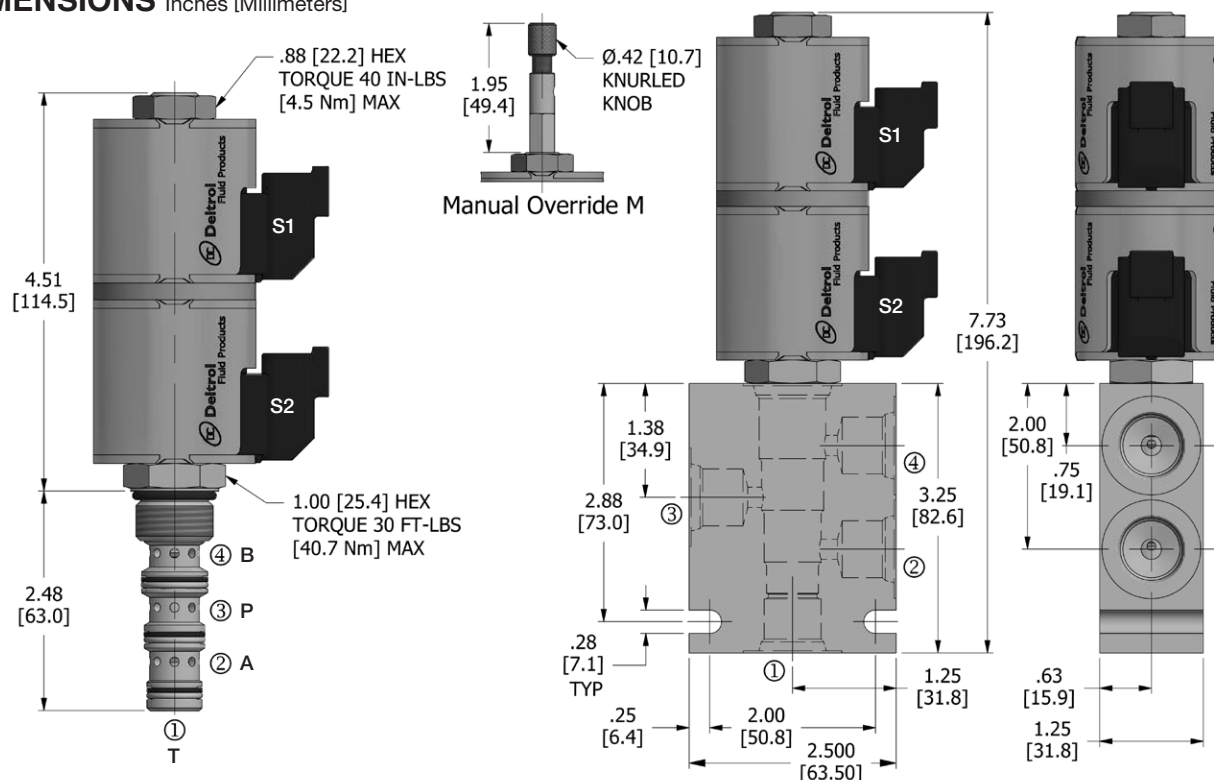
**Minimum Pull-In Voltage:** 85% of rated voltage at 3000 PSI (207 Bar)

**Recommended Filtration:** ISO 17/15/13

**Fluids:** Mineral-based fluids. For other fluid compatibility, consult factory.

**Cavity/Cavity Tool:** 100-4, see page 11.10.4

**In-Line Body Material:** Anodized 6061T6 aluminum  
alloy rated at 3000 PSI (207 Bar)

**DIMENSIONS** Inches [Millimeters]

**HOW TO ORDER**

<b>DSV</b>	-	<b>100</b>	-	<b>34 M</b>	-	<b>*</b>	-	<b>*</b>	-	<b>**</b>	<b>**</b>	-	<b>**</b>
Solenoid Valve		Cavity		Flow Path Motor Center		Seals		Manual Override		Voltage	Termination		Porting

Seals		Seal Kit
<b>N</b>	Buna N	
<b>V</b>	Viton	

Manual Override	
omit	No manual override
<b>M</b>	Manual override

Voltage†	
omit	Cartridge only w/nut
<b>D1</b>	DC 12 Volt
<b>D2</b>	DC 24 Volt
<b>D9</b>	DC 20 Volt
<b>D10</b>	DC 10 Volt
<b>A5</b>	AC 120 Volt
<b>A6</b>	AC 240 Volt

Termination†	
omit	Cartridge only w/nut
<b>DE</b>	Double Lead
<b>SE</b>	Single Lead
<b>HS</b>	Hirschmann®
<b>BE</b>	Double Spade
<b>EE</b>	Single Stud
<b>UE</b>	Deutsch
<b>PE</b>	Metri-Pack
<b>JE</b>	Amp Junior Timer

Porting†		In-Line Body w/o Cartridge
omit	Cartridge only w/nut	
<b>2N</b>	1/4 PTF	B-100-4-2N
<b>3N</b>	3/8 PTF	B-100-4-3N
<b>6T</b>	SAE 6	B-100-4-6T
<b>8T</b>	SAE 8	B-100-4-8T

† Other options available – consult factory

All variations may not be configurable. Minimum order quantities may be required on other models. Contact Deltrol Fluid Products for complete details.