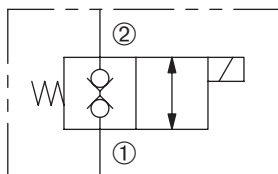


DSV-080-2NCSP

Normally-Closed, Two-Way, Two-Position,
Bi-Directional Solenoid Valve



SERIES 8



DESCRIPTION

A cartridge valve designed with positive shut off, blocking in both directions, to be used in load holding applications.

OPERATION

When de-energized, the DSV-080-2NCSP blocks flow in both directions.

When energized, the poppet shifts to allow flow in either direction.

Operation of Manual Override Option: To override, push button in to activate. To return to normal valve function, release button.

FEATURES and BENEFITS

- Continuous-duty solenoid.
- Uses Size 10 coils.
- Hardened poppet and seat for long life and low leakage.
- Efficient wet-armature construction.
- Cartridges are voltage interchangeable.
- Optional coil voltages and terminations.
- Low leak valve available.
- Manual override option.
- Industry common cavity.

SPECIFICATIONS

Operating Pressure: 3000 PSI (207 Bar)

Flow: See PRESSURE DROP VS. FLOW graph.

Internal Leakage: 5 drops/min. max. at 3000 PSI (207 Bar)

Low leakage available -

Less than 2 drops/min. max. at 3000 PSI (207 Bar)

Temperature: -30°F to +250°F (-35°C to +120°C)

Coil Rating: Continuous from 85% to 110% of rated voltage.

Current Draw: 12 VDC is 1.8 amps.

Minimum Pull-In Voltage: 85% of rated voltage at 3000 PSI (207 Bar)

Response Time: 80% of final change of state with 100% voltage supplied at 100% of nominal flow rating.

Pull-In: 12 VDC 41 m. sec. **Drop-Out:** 12 VDC 30 m. sec.

Recommended Filtration: Critical Application – ISO 17/15/13

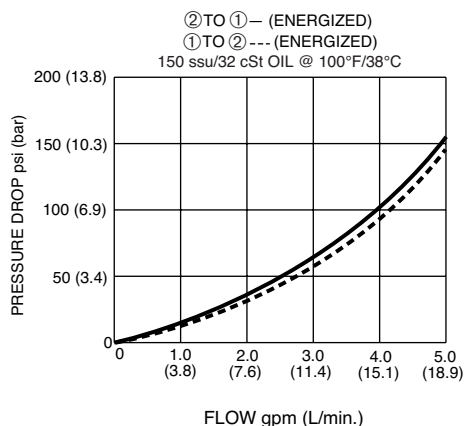
Non-Critical Application – ISO 20/18/14

Fluids: Mineral-based fluids. For other fluid compatibility, consult factory.

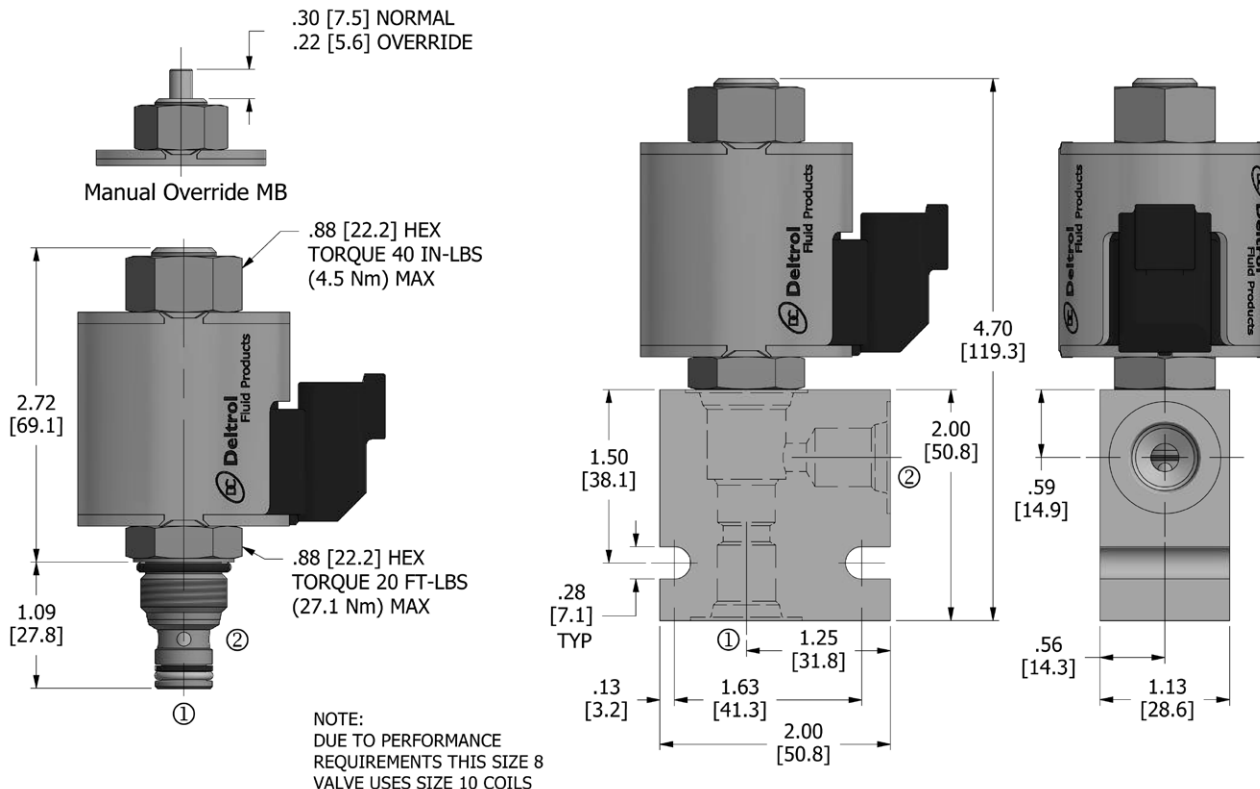
Cavity/Cavity Tool: 080-2, see page 11.08.2

In-Line Body Material: Anodized 6061T6 aluminum alloy rated at 3000 PSI (207 Bar).

PRESSURE DROP VS. FLOW



DIMENSIONS Inches [Millimeters]



HOW TO ORDER

DSV	-	080	-	2	NC	SP	-	*	-	*	-	*	-	**	**	-	**
Solenoid Valve		Cavity		Flow Path	Normally Closed	Bi-Directional		Seals		Manual Override		Low Leakage		Voltage	Termination		Porting

Seals		Seal Kit
N	Buna N	DSK-080-2-N-A
V	Viton	DSK-080-2-V-A

Manual Override	
omit	Standard manual override
MB	Push

Low Leakage	
omit	Standard leakage
L	Low leakage

Voltage†	
omit	Cartridge only w/nut
D1	DC 12 Volt
D2	DC 24 Volt
D9	DC 20 Volt
D10	DC 10 Volt
A5	AC 120 Volt
A6	AC 240 Volt

Termination†	
omit	Cartridge only w/nut
DE	Double Lead
SE	Single Lead
HS	Hirschmann®
BE	Double Spade
EE	Single Stud
UE	Deutsch
PE	Metri-Pack
JE	Amp Junior Timer

Porting†		In-Line Body w/o Cartridge
omit	Cartridge only w/nut	
2N	1/4 PTF	B-080-2-2N
3N	3/8 PTF	B-080-2-3N
4T	SAE 4	B-080-2-4T
6T	SAE 6	B-080-2-6T

† Other options available – consult factory

All variations may not be configurable. Minimum order quantities may be required on other models. Contact Deltrol Fluid Products for complete details.