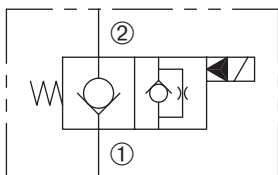


DSV-080-2NCP

Normally-Closed, Two-Way, Two-Position,
Pilot-Operated Solenoid Valve



SERIES 8



DESCRIPTION

A cartridge valve designed with positive shut off to be used in load holding applications.

OPERATION

When de-energized, the DSV-080-2NCP acts as a check valve, allowing flow from ① to ②, while blocking flow from ② to ①. When energized, the poppet lifts to open the ② to ① flow path.

Operation of Manual Override Option M: To override, push button in, twist counterclockwise and release. In this position, the valve will remain open. To return to normal operation, push button in, twist clockwise and release. Override will be detented in this position. **Option MP, MF, MM:** To override, pull spring-loaded knob/adaptor on top of valve. Release to return to normal operation.

FEATURES and BENEFITS

- 4000 PSI (276 Bar) rating.
- Continuous-duty solenoid.
- Hardened poppet and plunger for long life and low leakage.
- Efficient wet-armature construction.
- Cartridges are voltage interchangeable.
- Optional coil voltages and terminations.
- Filter screen standard.
- Low leak option available.
- Manual override option.
- Industry common cavity.

SPECIFICATIONS

Operating Pressure: 4000 PSI (276 Bar)

Flow: See PRESSURE DROP VS. FLOW graph

Internal Leakage: 5 drops/min. max. at 4000 PSI (276 Bar)

Low leakage available-

Less than 2 drops/min. max. at 4000 PSI (276 Bar)

Temperature: -30° F to +250° F (-35°C to +120° C)

Coil Rating: Continuous from 85% to 110% of rated voltage.

Current Draw: 12 VDC is 1.3 amps.

Minimum Pull-In Voltage: 85% of rated voltage at 4000 PSI (276 Bar)

Response Time: 80% of final change of state with 100% voltage supplied at 100% of nominal flow rating.

Pull-In: 12 VDC 16 m. sec. **Drop-Out:** 12 VDC 18 m. sec.

Recommended Filtration: Critical Application-ISO 17/15/13

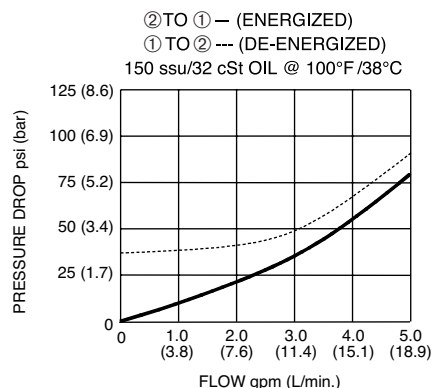
Non-Critical Application-ISO 20/18/14

Fluids: Mineral-based fluids. For other fluid compatibility consult factory.

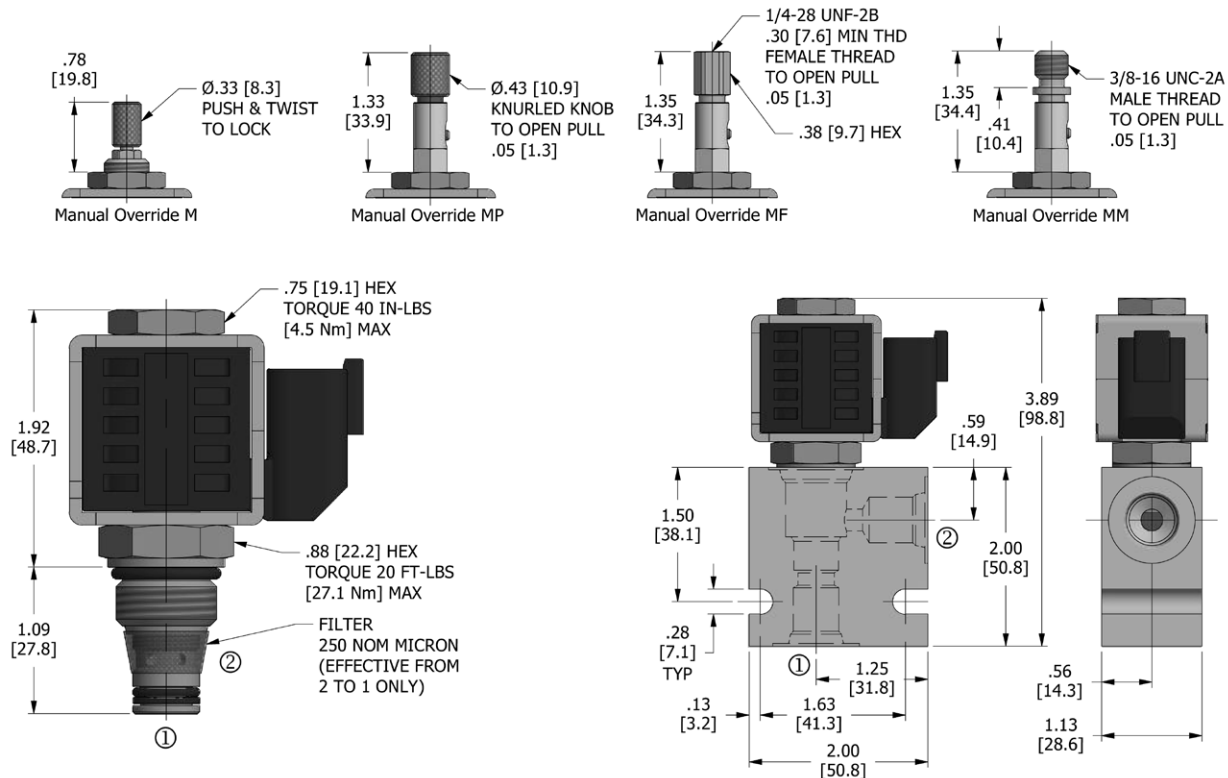
Cavity/Cavity Tool: 080-2, see page 11.08.2

In-Line Body Material: Anodized 6061T6 aluminum
allay rated at 3000 PSI (207 Bar).

PRESSURE DROP VS. FLOW



DIMENSIONS Inches [Millimeters]



HOW TO ORDER

DSV	-	080	-	2	NC	P	-	*	-	*	-	*	-	**	**	-	**
Solenoid Valve		Cavity		Flow Path	Normally Closed	Poppet		Seals		Manual Override		Low Leakage		Voltage	Termination		Porting

Seals		Seal Kit
N	Buna N	DSK-080-2-N-A
V	Viton	DSK-080-2-V-A

Manual Override	
omit	No manual override
M	Detented in both positions
MP	Knurled Knob Pull
MF	Female Pull 1/4-28 UNF
MM	Male Pull 3/8-16 UNC

Low Leakage	
omit	Standard leakage
L	Low leakage

Voltage†	
omit	Cartridge only w/nut
D1	DC 12 Volt
D2	DC 24 Volt
D9	DC 20 Volt
D10	DC 10 Volt
A5	AC 120 Volt
A6	AC 240 Volt

Termination†	
omit	Cartridge only w/nut
DE	Double Lead
SE	Single Lead
HS	Hirschmann®
CS	Conduit
BE	Double Spade
EE	Single Stud
UE	Deutsch
PE	Metri-Pack
JE	Amp Junior Timer

Porting†		In-Line Body w/o Cartridge
omit	Cartridge only w/nut	
2N	1/4 PTF	B-080-2-2N
3N	3/8 PTF	B-080-2-3N
4T	SAE 4	B-080-2-4T
6T	SAE 6	B-080-2-6T

† Other options available – consult factory

All variations may not be configurable. Minimum order quantities may be required on other models. Contact Deltrol Fluid Products for complete details.