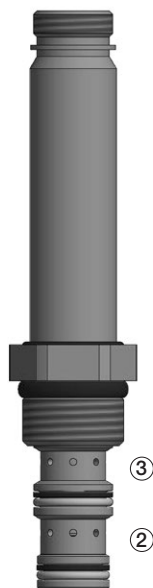
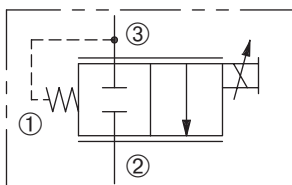


DPV-100-2NC

Normally-Closed,
Proportional, Flow Control Valve

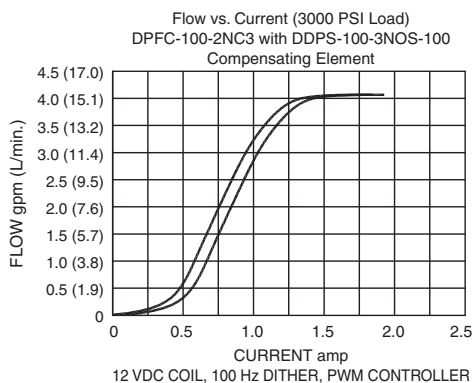
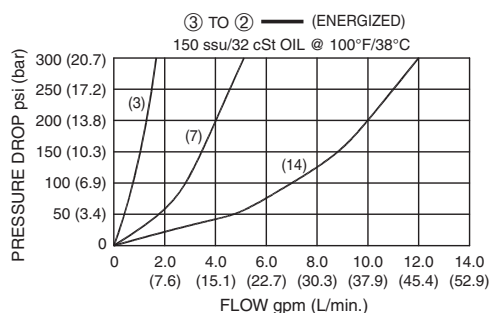


SERIES 10



①
Plug

PRESSURE DROP VS. FLOW



DESCRIPTION

A cartridge valve designed as a normally closed, spool-type, proportional valve for use with a compensating element to provide an electrically variable pressure-compensated flow control.

OPERATION

As electrical current is applied to the coil, the spool will gradually shift from closed to open as current increases to 2 amps maximum. Flow will pass from port ③ to port ② up to 300 psi differential.

Port ① is plugged.

The valve can also function as a differential control for load sense applications.

The valve functions with industry-common controllers which provide PWM current input to 2 amps @ 12 VDC.

OPERATION OF MANUAL OVERRIDE:

To override, push button in to activate.

To return to normal function, release button.

FEATURES and BENEFITS

- Valve controllers along with portable controller programming devices to vary PWM Duty Cycle, Ramp Time, Current Limit, Dither Frequency and Amplitude, can be provided by consulting the factory.
- Hardened precision spool and sleeve for long life.
- Efficient wet-armature construction.
- Cartridges are voltage interchangeable.
- Optional coil voltages and terminations.
- Industry common cavity.

SPECIFICATIONS

Coil Specifications:

12 Volt System

Resistance 4.0 ohms @ 20°C

Threshold Current 300 ± 70mA

Max. Control Current 1500 ± 200mA

24 Volt System

Resistance 16.0 ohms @ 20°C

Threshold Current 150 ± 35mA

Max. Control Current 750 ± 100mA

Operating Pressure: 3000 PSI (207 Bar)

Flow: See PERFORMANCE DROP VS. FLOW graph.

Internal Leakage: (per land) 10 in³/min. (164 cc/min) at 3000 PSI (207 Bar)

Temperature: -30°F to +250°F (-35°C to +120°C)

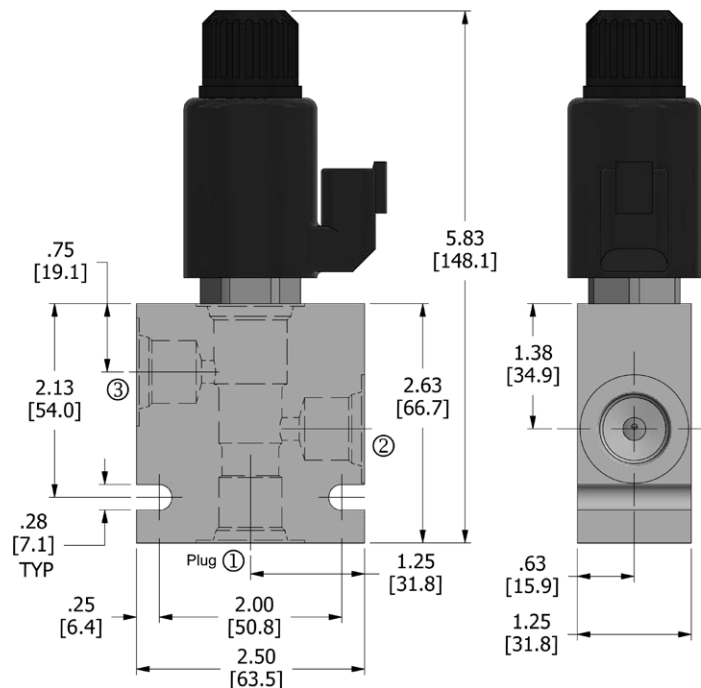
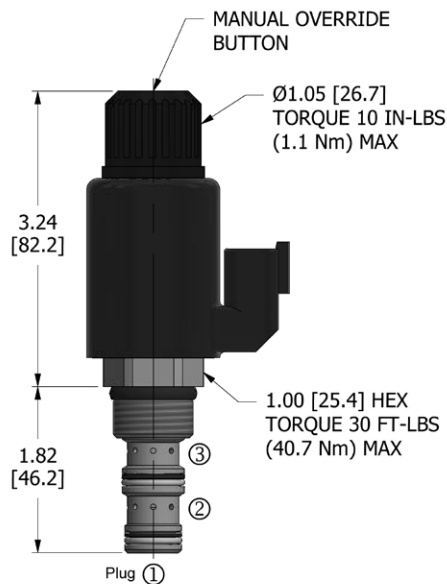
Coil Rating: Continuous from 85% to 110% of rated voltage.

Recommended Filtration: ISO 16/12

Fluids: Mineral-based fluids.

Cavity/Cavity Tool: 100-3, see page 11.10.3

DIMENSIONS Inches [Millimeters]



HOW TO ORDER

DPV	-	100	-	2	NC	*	-	*	-	**	**	-	**
Proportional Flow Control Valve		Cavity		Flow Path	Normally Closed	Seals		Flow		Voltage	Termination		Porting

Seals	Seal Kit
N	Buna N

Flow	
3	3 gpm (11.4 lpm)
7	7 gpm (26.5 lpm)
14	14 gpm (53.0 lpm)

Voltage	
omit	Cartridge only w/nut
D1	DC 12 Volt
D2	DC 24 Volt

Termination	
omit	Cartridge only w/nut
H	Hirschmann®

Porting	In-Line Body w/o Cartridge
omit	Cartridge only w/nut
6T	SAE 6 B-100-3-6T
8T	SAE 8 B-100-3-8T

All variations may not be configurable. Minimum order quantities may be required on other models. Contact Deltrol Fluid Products for complete details.