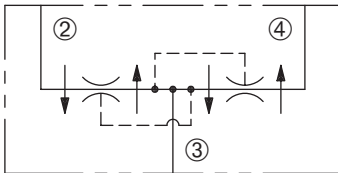


# DFD-100

Pressure-Compensated,  
Flow Divider/Combiner Valve



## SERIES 10



## DESCRIPTION

A cartridge valve designed to divide or combine flow at designated ratios regardless of load pressures.

## OPERATION

In the dividing mode, the DFD-100 will split the input flow from port ③ to ports ② and ④ per the ratio specified.

The DFD-100 will combine input flows from ports ② and ④ to a common port ③.

This valve has no port ① function.

## FEATURES and BENEFITS

- Pressure-compensated.
- Quiet response.
- Optional dividing/combining ratios.
- Industry common cavity.

## SPECIFICATIONS

**Operating Pressure:** 3000 PSI (207 Bar) A minimum pressure differential of 40 psid is required to operate valve.

**Flow:** See max. rated input flow in ordering table.

**Flow Tolerances:**  $\pm 10\%$  from 30-100% of rated flow for all 5/5 models except 16.0-5/5 which is  $\pm 10\%$  from 40-100% of rated flow. (Consult factory for all other models.)

**Temperature:**  $-30^{\circ}\text{F}$  to  $+250^{\circ}\text{F}$  ( $-35^{\circ}\text{C}$  to  $+120^{\circ}\text{C}$ )

**Recommended Filtration:** ISO 17/15/13

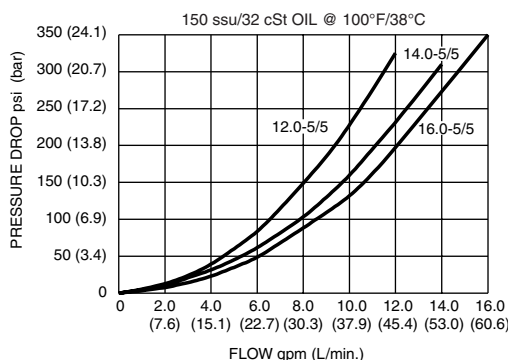
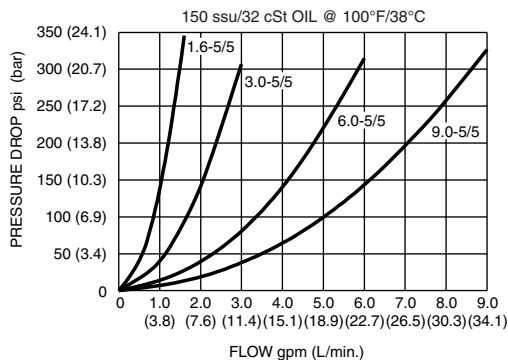
**Fluids:** Mineral-based fluids.

For other fluid compatibility consult factory.

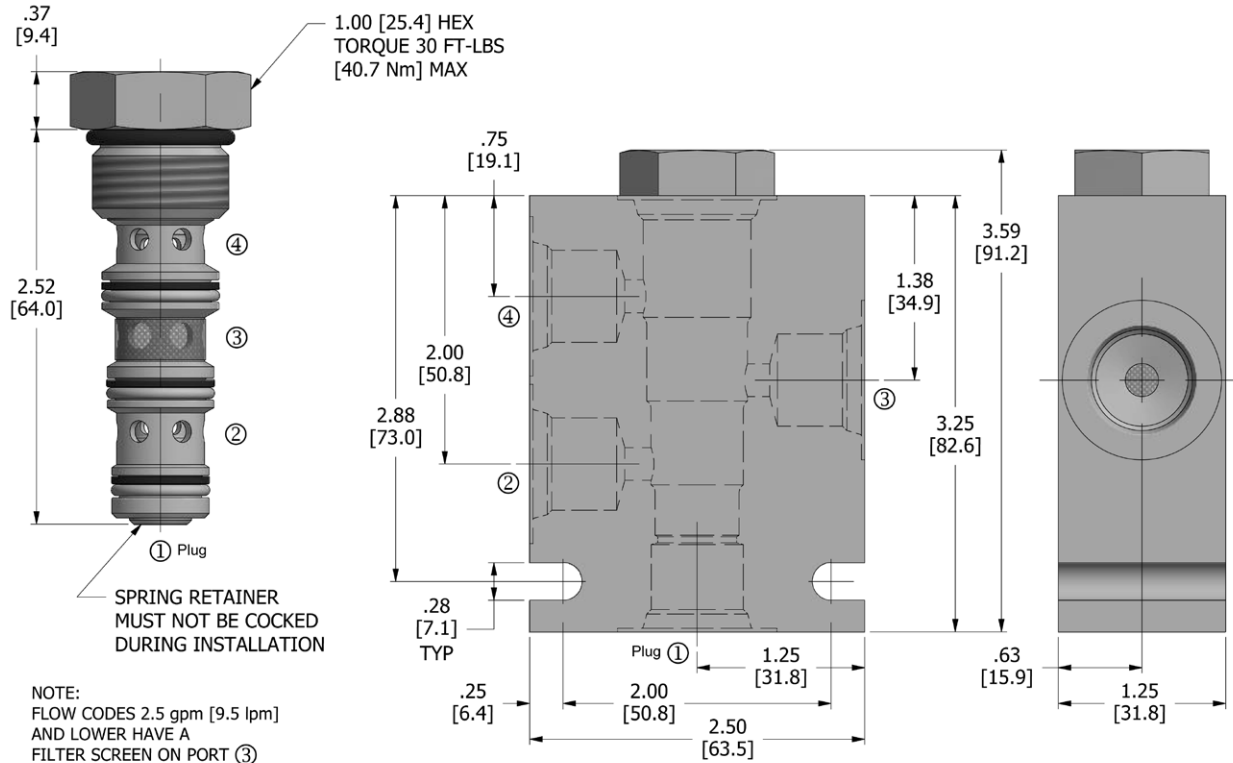
**Cavity/Cavity Tool:** 100-4, see page 11.10.4

**In-Line Body Material:** Anodized 6061T6 aluminum alloy rated at 3000 PSI (207 Bar).

## PRESSURE DROP VS. FLOW



## DIMENSIONS Inches [Millimeters]



## HOW TO ORDER

**DFD** - **100** - **\*** - **\*\*\*\*** - **\*/\*** - **\*\***

Flow Divider  
Combiner Valve

Cavity

Seals

Flow

Ratio

Porting

Seals		Seal Kit
<b>N</b>	Buna N	
<b>V</b>	Viton	

Porting <sup>†</sup>		In-Line Body w/o Cartridge
omit	Cartridge only	
<b>2N</b>	1/4 PTF	B-100-4/3-2N
<b>3N</b>	3/8 PTF	B-100-4/3-3N
<b>6T</b>	SAE 6	B-100-4/3-6T
<b>8T</b>	SAE 8	B-100-4/3-8T

Use In-Line body without port ① or plug port ①.

Flow and Ratio <sup>†</sup> (Dividing or Combining)					
	Input Flow Max.	Ratio (Port 2/Port 4)		Input Flow Max.	Ratio (Port 2/Port 4)
<b>0.6 - 5/5</b>	0.6 gpm (2.3 lpm)	50:50	<b>9.0 - 7/3</b>	9.0 gpm (34.1 lpm)	67:33
<b>1.6 - 5/5</b>	1.6 gpm (6.1 lpm)	50:50	<b>9.0 - 3/7</b>	9.0 gpm (34.1 lpm)	33:67
<b>2.5 - 7/3</b>	2.5 gpm (9.5 lpm)	67:33	<b>12.0 - 5/5</b>	12.0 gpm (45.4 lpm)	50:50
<b>2.5 - 3/7</b>	2.5 gpm (9.5 lpm)	33:67	<b>12.5 - 7/3</b>	12.5 gpm (47.3 lpm)	67:33
<b>3.0 - 5/5</b>	3.0 gpm (11.4 lpm)	50:50	<b>12.5 - 3/7</b>	12.5 gpm (47.3 lpm)	33:67
<b>4.5 - 7/3</b>	4.5 gpm (17.0 lpm)	67:33	<b>14.0 - 5/5</b>	14.0 gpm (53.0 lpm)	50:50
<b>4.5 - 3/7</b>	4.5 gpm (17.0 lpm)	33:67	<b>14.0 - 6/4</b>	14.0 gpm (53.0 lpm)	60:40
<b>6.0 - 5/5</b>	6.0 gpm (22.7 lpm)	50:50	<b>14.0 - 4/6</b>	14.0 gpm (53.0 lpm)	40:60
<b>7.5 - 6/4</b>	7.5 gpm (28.4 lpm)	60:40	<b>16.0 - 5/5</b>	16.0 gpm (60.6 lpm)	50:50
<b>7.5 - 4/6</b>	7.5 gpm (28.4 lpm)	40:60			
<b>9.0 - 5/5</b>	9.0 gpm (34.1 lpm)	50:50			

<sup>†</sup> Other options available – consult factory

All variations may not be configurable. Minimum order quantities may be required on other models. Contact Deltrol Fluid Products for complete details.