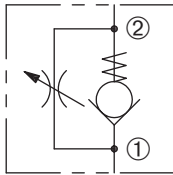


DFC-080

Adjustable,
Flow Control Valve

SERIES 8

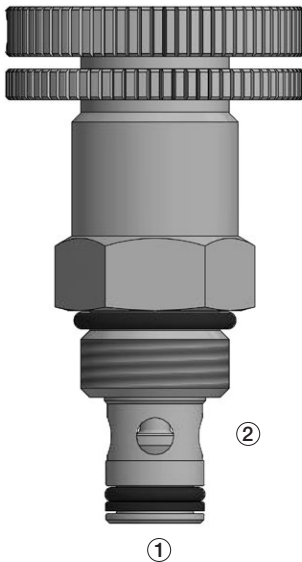


DESCRIPTION

A cartridge valve designed to provide variable flow restriction in one direction with free flow in the opposite direction.

OPERATION

The DFC-080 varies flow restriction by adjusting needle in or out. Flow is metered from ② to ①. Free reverse flow is from ① to ②.



FEATURES and BENEFITS

- Hardened poppet and seat for long life.
- Aluminum knob and disc nut.
- Full range of adjustments.
- Adjustment may be locked in place.
- Industry common cavity.

SPECIFICATIONS

Operating Pressure: 3000 PSI (207 Bar)

Flow: 10 gpm (37.9 L/min.) max recommended input.

Temperature: -30°F to +250°F (-35°C to +120°C)

Recommended Filtration: ISO 20/18/14

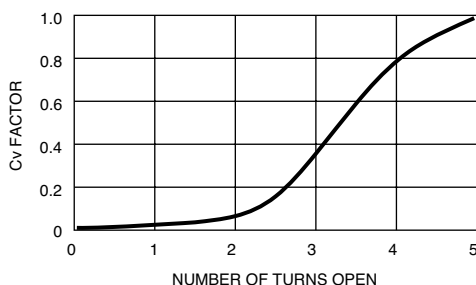
Fluids: Mineral-based fluids.

For other fluid compatibility, consult factory.

Cavity/Cavity Tool: 080-2, see page 11.08.2

In-Line Body Material: Anodized 6061T6 aluminum alloy rated at 3000 PSI (207 Bar).

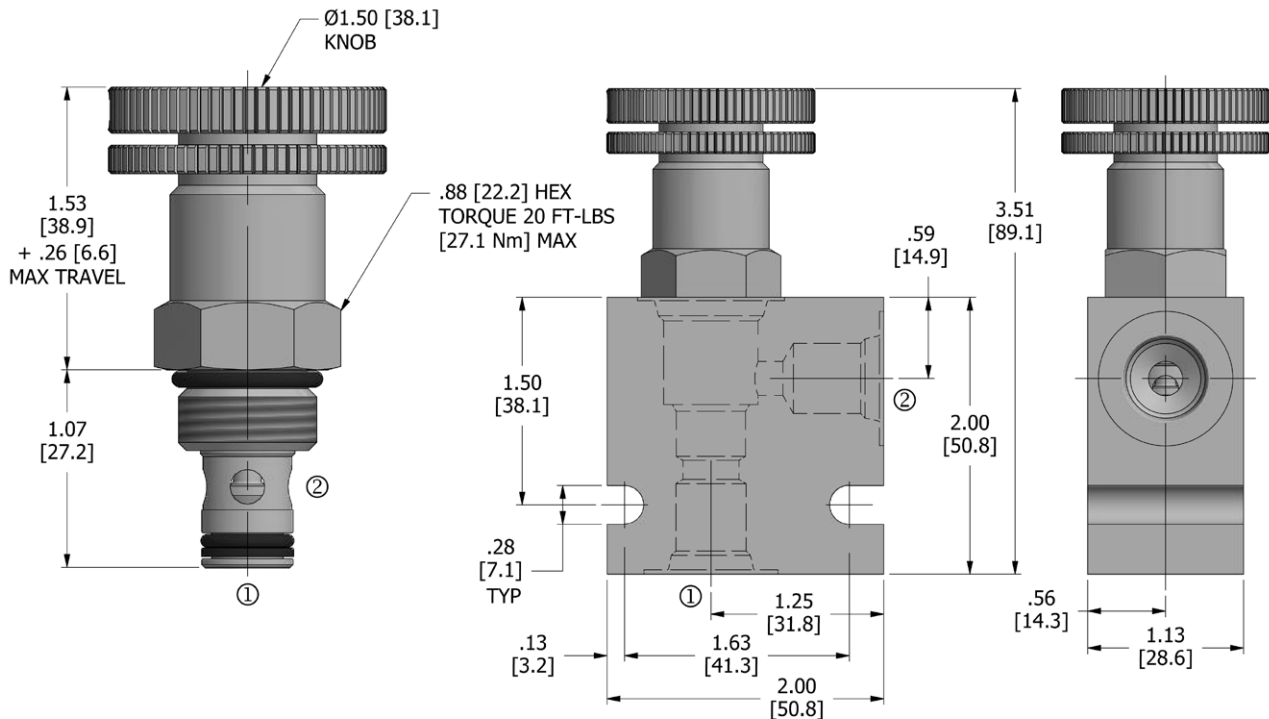
CV FACTOR VS. TURNS OPEN



$$\text{FLOW IN GPM} = \frac{C_v \sqrt{P_1 - P_2}}{\sqrt{G_f}}$$

C_v = Flow Coefficient
 P_1 = Inlet Pressure (psi)
 P_2 = Outlet Pressure (psi)
 G_f = specific gravity of medium at operating temperature in °F.

DIMENSIONS Inches [Millimeters]



HOW TO ORDER

DFC - **080** - ***** - **K** - ******

Needle Valve Cavity Seals Knob Porting

Seals		Seal Kit
N	Buna N	DSK-080-2-N-A
V	Viton	DSK-080-2-V-A

Porting [†]		In-Line Body w/o Cartridge
omit	Cartridge only	
2N	1/4 PTF	B-080-2-2N
3N	3/8 PTF	B-080-2-3N
4T	SAE 4	B-080-2-4T
6T	SAE 6	B-080-2-6T

[†] Other options available – consult factory

All variations may not be configurable. Minimum order quantities may be required on other models. Contact Deltrol Fluid Products for complete details.