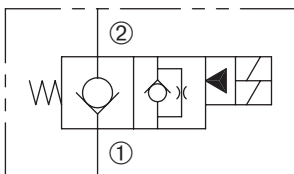


# DDSV-080-2NCP

Normally-Closed, Two-Way, Two-Position,  
Dual-Coil, Pilot-Operated Solenoid Valve



## SERIES 8



## DESCRIPTION

A cartridge valve designed with positive shut off, low leakage, to be used in load holding applications where system requires redundant methods of operation.

## OPERATION

When de-energized, the DDSV-080-2NCP acts as a check valve, allowing flow from ① to ②, while blocking flow from ② to ①.

When either the top primary or bottom redundant coil is energized, the poppet lifts to open the ② to ① flow path.

## FEATURES and BENEFITS

- 4000 PSI rating (276 Bar).
- Continuous-duty solenoid.
- Efficient wet-armature construction.
- Hardened poppet and seat for long life.
- Cartridges are voltage interchangeable.
- Optional coil voltages and terminations.
- Filter screen standard.
- Industry common cavity.

## SPECIFICATIONS

**Operating Pressure:** 4000 PSI (276 Bar)

**Flow:** See PRESSURE DROP VS. FLOW graph.

**Internal Leakage:** 5 drops/min. max. at 4000 PSI (276 Bar)

**Temperature:** -30°F to +250°F (-35°C to +120°C)

**Coil Rating:** Continuous from 85% to 110% of rated voltage.

**Current Draw:** 12 VDC is 1.3 amps.

**Minimum Pull-In Voltage:** 85% of rated voltage at 4000 PSI (276 Bar)

**Response Time:** 80% of final change of state with 100% voltage supplied at 100% of nominal flow rating.

**Pull-In:** 12 VDC 16 m. sec. **Drop-Out:** 12 VDC 18 m. sec.

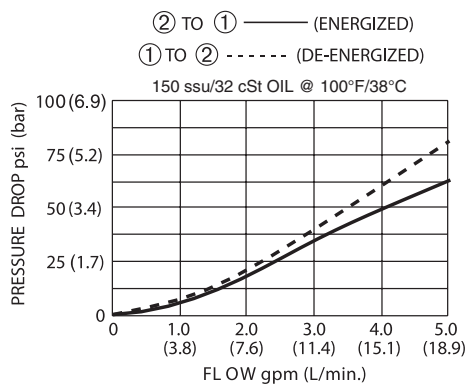
**Recommended Filtration:** Critical Application – ISO 17/15/13  
Non-Critical Application – ISO 20/18/14

**Fluids:** Mineral-based fluids. For other fluid compatibility, consult factory.

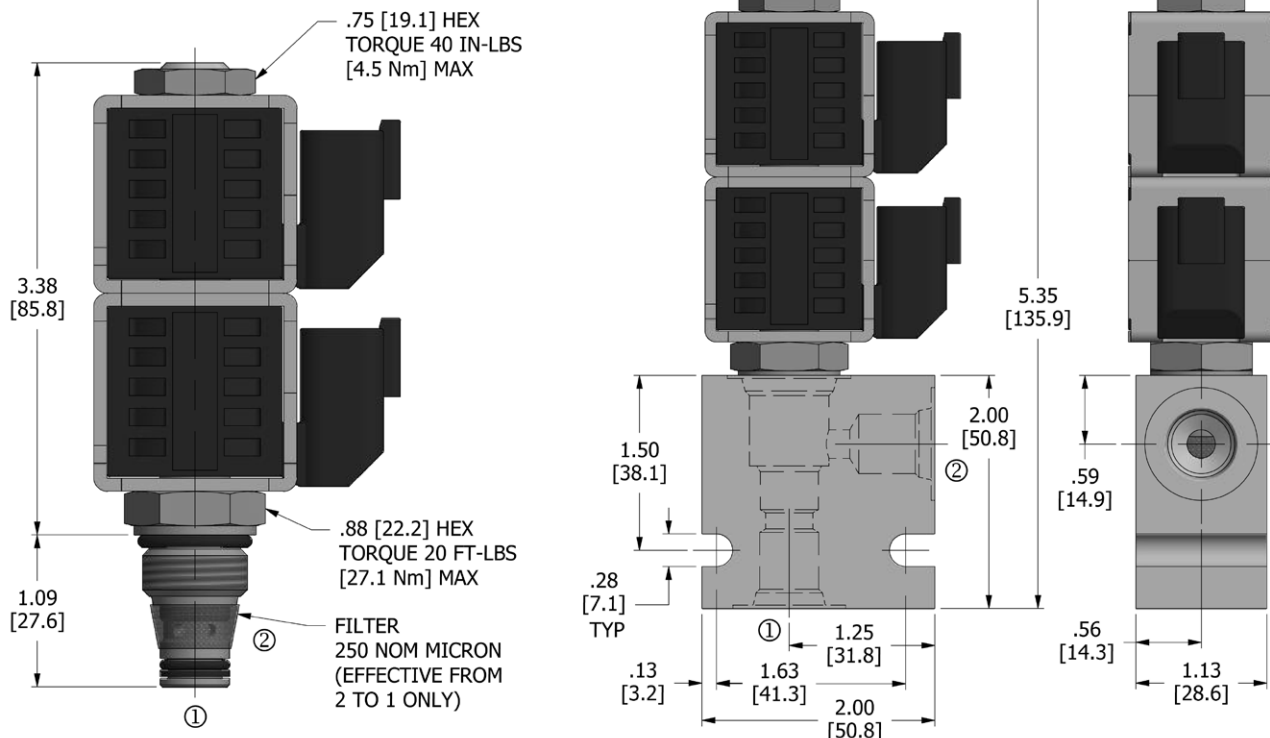
**Cavity/Cavity Tool:** 080-2, see page 11.08.2

**In-Line Body Material:** Anodized 6061T6 aluminum alloy rated at 3000 PSI (207 Bar).

## PRESSURE DROP VS. FLOW



## DIMENSIONS Inches [Millimeters]



## HOW TO ORDER

**DDSV** - **080** - **2** **NC** **P** - **\*** - **\*\*** **\*\*** - **\*\***

Solenoid Valve    Cavity    Flow Path    Normally Closed    Poppet    Seals    Voltage    Termination    Porting

Seals		Seal Kit
<b>N</b>	Buna N	DSK-080-2-N-A
<b>V</b>	Viton	DSK-080-2-V-A

Voltage <sup>†</sup>	
omit	Cartridge only w/nut
<b>D1</b>	DC 12 Volt
<b>D2</b>	DC 24 Volt
<b>D9</b>	DC 20 Volt
<b>D10</b>	DC 10 Volt
<b>A5</b>	AC 120 Volt
<b>A6</b>	AC 240 Volt

Termination <sup>†</sup>	
omit	Cartridge only w/nut
<b>DE</b>	Double Lead
<b>SE</b>	Single Lead
<b>HS</b>	Hirschmann®
<b>CS</b>	Conduit
<b>BE</b>	Double Spade
<b>EE</b>	Single Stud
<b>UE</b>	Deutsch
<b>PE</b>	Metri-Pack
<b>JE</b>	Amp Junior Timer

Porting <sup>†</sup>		In-Line Body w/o Cartridge
omit	Cartridge only w/nut	
<b>2N</b>	1/4 PTF	B-080-2-2N
<b>3N</b>	3/8 PTF	B-080-2-3N
<b>6T</b>	SAE 6	B-080-2-6T
<b>8T</b>	SAE 8	B-080-2-8T

<sup>†</sup> Other options available – consult factory

All variations may not be configurable. Minimum order quantities may be required on other models. Contact Deltrol Fluid Products for complete details.