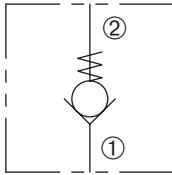


DCV-100-P

Direct-Acting, Poppet-Type
Cartridge Check Valve



SERIES 10



DESCRIPTION

A cartridge valve designed to allow free flow in one direction, while preventing flow in the opposite direction. This valve is commonly used as a load-holding or blocking valve.

OPERATION

Pressure at ① overcomes the spring-bias poppet and allows free flow to ②. Flow in the opposite direction, from ② to ①, is blocked by the poppet.

FEATURES and BENEFITS

- Hardened poppet and seat for long life.
- Industry common cavity.

SPECIFICATIONS

Operating Pressure: 3000 PSI (207 Bar)

Flow: See PRESSURE DROP VS. FLOW graph.

Internal Leakage: 5 drops/min. max. at 3000 PSI (207 Bar)

Crack Pressure: 5 PSI (0.3 Bar)

15 PSI (1.0 Bar)

30 PSI (2.1 Bar)

65 PSI (4.5 Bar)

100 PSI (6.9 Bar)

300 PSI (20.7 Bar)

Temperature: -30°F to +250°F (-35°C to +120°C)

Recommended Filtration: Critical Application – ISO 17/15/13

Non-Critical Application – ISO 20/18/14

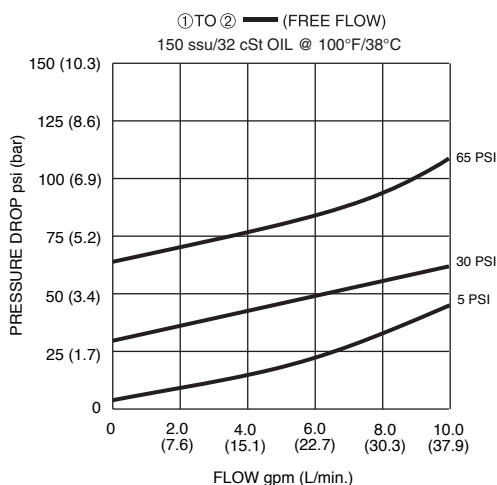
Fluids: Mineral-based fluids.

For other fluid compatibility, consult factory.

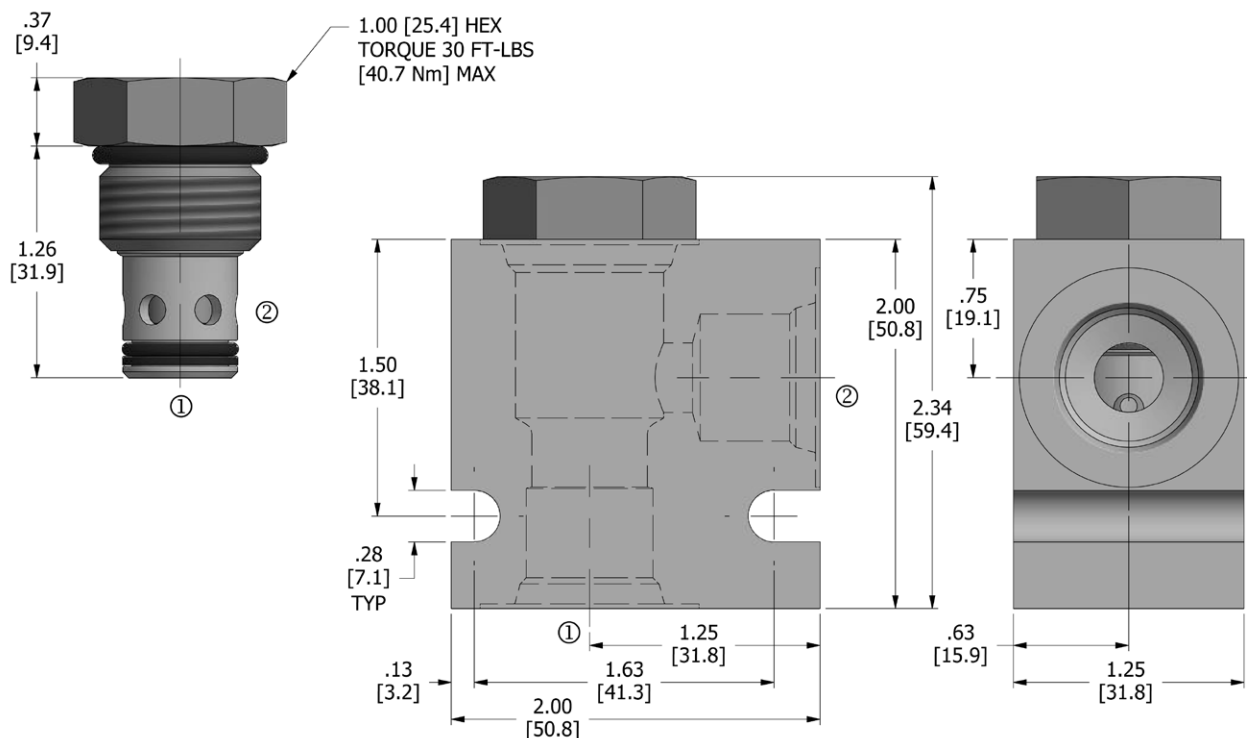
Cavity/Cavity Tool: 100-2, see page 11.10.2

In-Line Body Material: Anodized 6061T6 aluminum alloy rated at 3000 PSI (207 Bar).

PRESSURE DROP VS. FLOW



DIMENSIONS Inches [Millimeters]



HOW TO ORDER

DCV	-	100	-	P	-	*	-	**	-	**
Check Valve		Cavity		Poppet		Seals		Crack Pressure		Porting

Seals		Seal Kit
N	Buna N	DSK-100-2-N-A
V	Viton	DSK-100-2-V-A

Crack Pressure	
5	5 psi (0.3 bar)
15	15 psi (1.0 bar)
30	30 psi (2.1 bar)
65	65 psi (4.5 bar)
100	100 psi (6.9 bar)
300	300 psi (20.7 bar)

Porting [†]		In-Line Body w/o Cartridge
omit	Cartridge only	
2N	1/4 PTF	B-100-2-2N
3N	3/8 PTF	B-100-2-3N
6T	SAE 6	B-100-2-6T
8T	SAE 8	B-100-2-8T

[†] Other options available – consult factory

All variations may not be configurable. Minimum order quantities may be required on other models. Contact Deltrol Fluid Products for complete details.