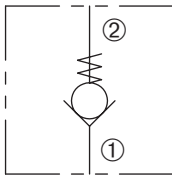


# DCV-080-B

Direct-Acting, Ball-Type  
Check Valve

## SERIES 8



### DESCRIPTION

A cartridge valve designed to allow free flow in one direction, while preventing flow in the opposite direction. This valve is commonly used as a load-holding or blocking valve.

### OPERATION

Pressure at ① overcomes the spring-bias ball and allows free flow to ②. Flow in the opposite direction, from ② to ①, is blocked by the ball.



### FEATURES and BENEFITS

- Guide ball assembly.
- Chrome alloy ball for long life.
- Low leak.
- Industry common cavity.

### SPECIFICATIONS

**Operating Pressure:** 3000 PSI (207 Bar)

**Flow:** See PRESSURE DROP VS. FLOW graph.

**Internal Leakage:** 2 drops/min. max. at 3000 PSI (207 Bar)

**Crack Pressure:** 2 PSI ( 0.1 Bar)  
5 PSI ( 0.3 Bar)  
10 PSI ( 1.0 Bar)  
25 PSI ( 1.7 Bar)

**Temperature:** -30°F to +220°F (-35°C to +104°C)

**Recommended Filtration:** Critical Application – ISO 17/15/13

Non-Critical Application – ISO 20/18/14

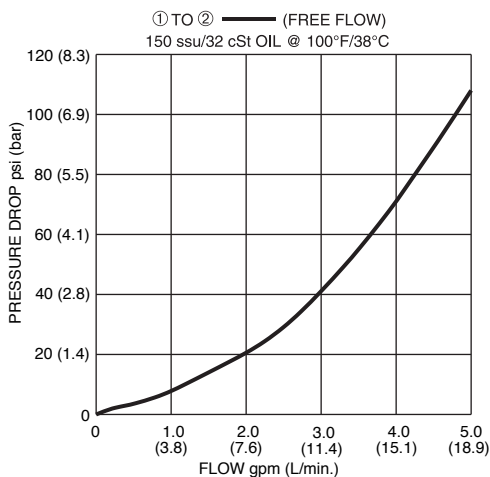
**Fluids:** Mineral-based fluids.

For other fluid compatibility, consult factory.

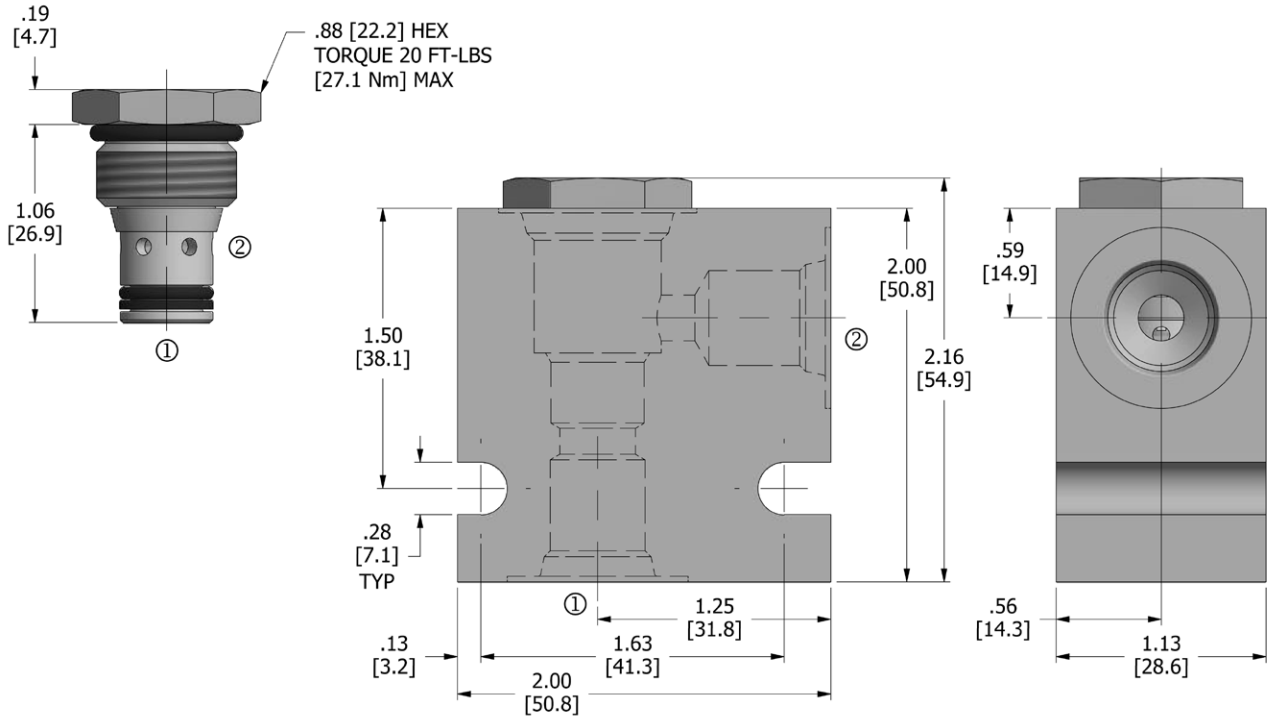
**Cavity/Cavity Tool:** 080-2, see page 11.08.2

**In-Line Body Material:** Anodized 6061T6 aluminum alloy rated at 3000 PSI (207 Bar).

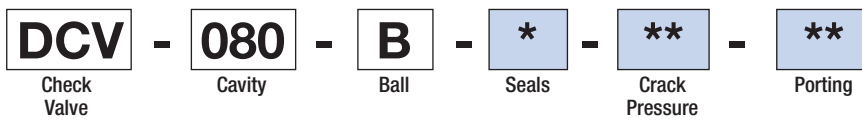
### PRESSURE DROP VS. FLOW



**DIMENSIONS** Inches [Millimeters]



**HOW TO ORDER**



Seals		Seal Kit
<b>N</b>	Buna N	DSK-080-2-N-A
<b>V</b>	Viton	DSK-080-2-V-A

Crack Pressure	
<b>2</b>	2 psi (0.1 bar)
<b>5</b>	5 psi (0.3 bar)
<b>10</b>	10 psi (0.7 bar)
<b>25</b>	25 psi (1.7 bar)

Porting <sup>†</sup>		In-Line Body w/o Cartridge
omit	Cartridge only	
<b>2N</b>	1/4 PTF	B-080-2-2N
<b>3N</b>	3/8 PTF	B-080-2-3N
<b>4T</b>	SAE 4	B-080-2-4T
<b>6T</b>	SAE 6	B-080-2-6T

<sup>†</sup> Other options available – consult factory

All variations may not be configurable. Minimum order quantities may be required on other models. Contact Deltrol Fluid Products for complete details.