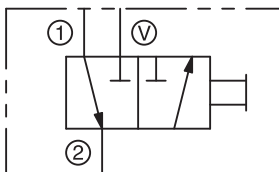


IN-LINE



DESCRIPTION

The Pneu-Trol slide valve is a manually operated, two-position, three-way valve for pneumatic applications. Ideal for applications such as gauges, air tools, air clamps, and single acting cylinders.

- **Two-Position, Three-Way manually operated valve**
- **For pneumatic applications only up to 250 psi (17 bar)**
- **Brass Sleeves assures ease of control and positive action**



SPECIFICATIONS

Maximum Operating Pressure (Non-Shock Service)

Carbon Steel: 250 psi (17 bar)

Operating Temperature Range (O-Ring)

Buna N: -30° to +250° F (-34° to +120° C)

Flow Rating

Co-Efficient (Cv Factor) = .98 to 3.26

Threads

NPTF

Materials

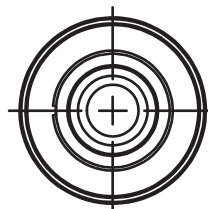
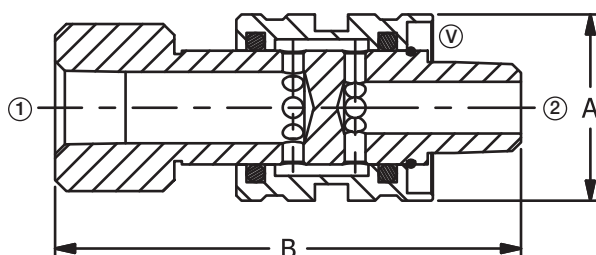
Body: Steel

Sleeve: Brass

O-Rings: Buna N

Retaining Ring: Steel

INSTALLATION DIMENSIONS



Pipe Size	A Diameter	B
1/8"	7/8 (22.2)	2-1/2 (63.5)
1/4"	1-1/8 (28.6)	2-3/4 (69.9)
3/8"	1-1/8 (28.6)	2-13/16 (71.5)
1/2"	1-1/2 (38.1)	3-3/4 (95.3)

() Parentheses = Millimeters

HOW TO ORDER

Size	NPTF Thread	Co-Efficient (Cv Factor)
1/8"	SL10	.98
1/4"	SL20	1.53
3/8"	SL25	1.78
1/2"	SL30	3.26