

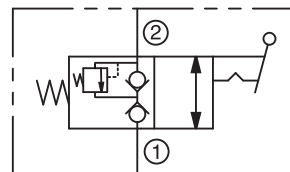
TV20B Directional Valve Female-to-Female

IN-LINE

DESCRIPTION

A toggle-operated two-way valve designed with positive shut off. The TV20B can be actuated by pushing or pulling the toggle and will over-center detent open.

- **Bubble-Tight operation**
- **Push or pull to operate – spring return**
- **Over-Center detent capable**
- **Panel or bracket mountable**
- **Handle hole for cable mount**



SPECIFICATIONS

Maximum Operating Pressure

Brass: 2,000 psi (138 bar)

Reverse Cracking Pressure

370 psi (26 bar)

Maximum Recommended Flow

5.0 gpm (18.9 lpm)

Operating Temperature Range

-30° to +250° F (-34° to +120° C)

Threads

NPTF 1/4"

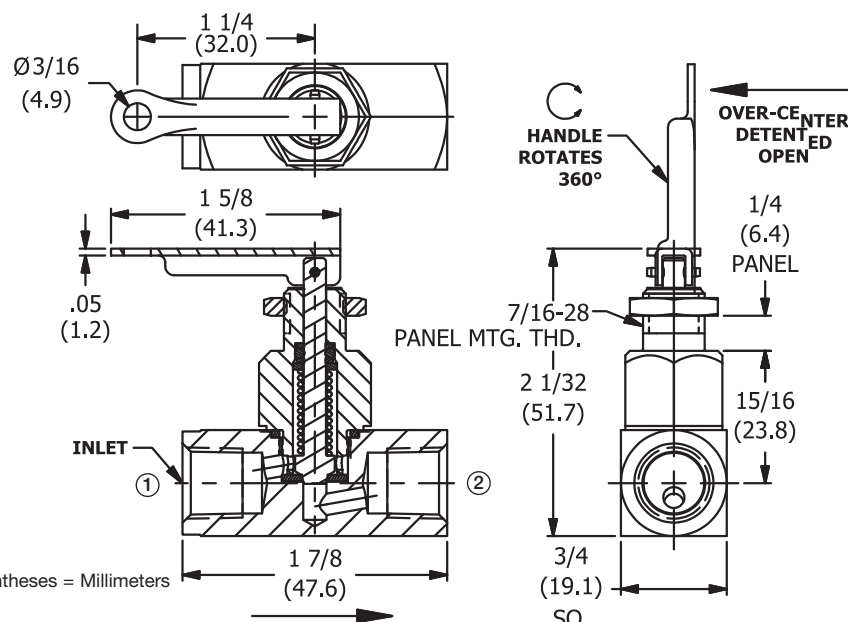
Panel Mounting Hole

15/32" (11.9)

Materials

Body, Housing: Brass
Seal Washer: Teflon
Seat: Teflon
Stem: Brass
Spring: Music Wire
Washers: Brass
O-Ring: Buna-N
Back-Up Washer: Teflon
Handle: Zinc Plated Steel
Roll Pin: Steel
Panel Mount Nut: Brass

INSTALLATION DIMENSIONS



HOW TO ORDER

Size	NPTF Thread	Co-Efficient (Cv Factor)
1/4"	TV20B	.20