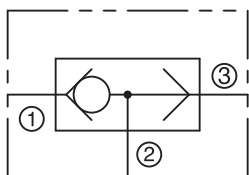


SV Shuttle, Ball-Type

Female-to-Female

IN-LINE



DESCRIPTION

Operates as a three-way valve with two inlet ports and one outlet port. The check ball moves away from the inlet port with the greatest differential pressure and against the port having the least differential pressure.

- Bubble-Tight Ball Check with O-rings

SPECIFICATIONS

Maximum Operating Pressure (Non-Shock Service)

Brass: 200 psi (14 bar)

Flow Rating

Co-Efficient (Cv Factor) = .74 and 1.35

Operating Temperature Range

-30° to +250° F (-34° to +120° C)

Threads

NPTF

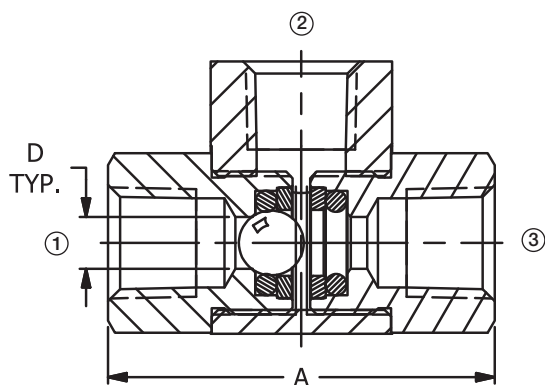
Materials

Body, Adapters, Retainers: Brass

Ball: Stainless Steel 440

O-Rings: Buna-N

INSTALLATION DIMENSIONS



Pipe Size	A	B	C	D orifice
1/8"	1-1/4 (31.8)	31/32 (24.6)	5/8 (15.9)	.188 (4.8)
1/4"	1-7/8 (47.6)	1-5/16 (33.4)	7/8 (22.2)	.250 (6.4)

() Parentheses = Millimeters

HOW TO ORDER

Size	NPTF Thread	Co-Efficient (Cv Factor)
	Brass	
1/8"	SV10B	.74
1/4"	SV20B	1.35