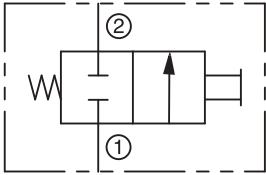


**POV32S Directional Valve**  
Female-to-Female

IN-LINE



**DESCRIPTION**

The Pneu-Trol plunger operated two-way valve controls hydraulic or pneumatic flow. This valve is normally closed and allows through flow when the plunger is manually depressed. The spring returned plunger blocks flow in the opposite direction.

- **Soft Seat for positive shut-off**
- **Panel or bracket mountable**



**SPECIFICATIONS**

**Maximum Operating Pressure (Non-Shock Service)**

Carbon Steel: 3,000 psi (207 bar)

**Operating Temperature Range**

-15° to +400° F (-26° to +204° C)

**Flow Rating**

Co-Efficient (Cv Factor) = 2.6

**Plunger Effort**

97 lbs. (431 N) per 1,000 psi (69 bar)

**Threads**

NPTF 1/2"

**Stroke**

1/2" (12.7)

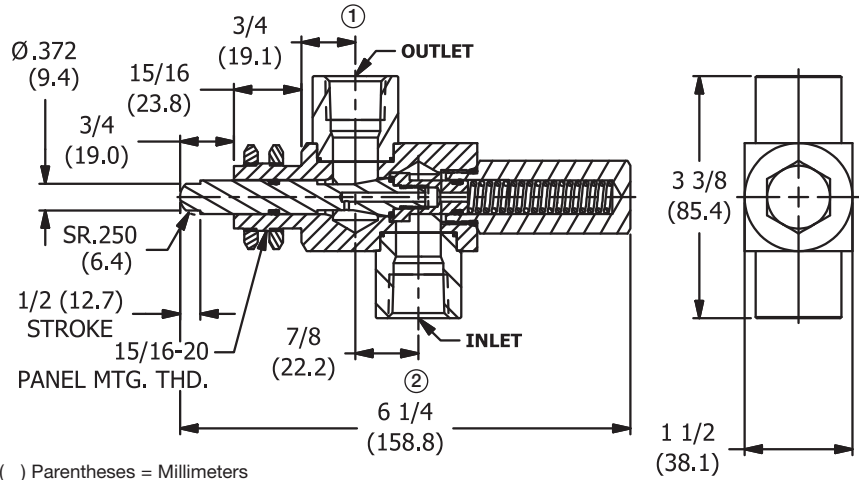
**Panel Mounting Hole Size**

31/32" (24.6)

**Materials**

- Body, Plug: Steel
- Spring: Music Wire
- Plunger: Stainless Steel 416 with Urethane O-Ring
- O-Rings: Viton
- Back-Up Washer: Teflon
- Panel Mount Nuts: Nickel Plated Brass

**INSTALLATION DIMENSIONS**



**HOW TO ORDER**

Size	NPTF Thread	Co-Efficient (Cv Factor)
1/2"	POV32S	2.6