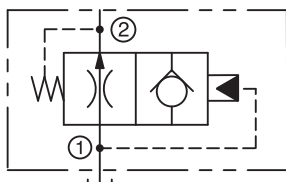


IN-LINE



**DESCRIPTION**

The Pneu-Trol air bleed valve is used to remove trapped air from a hydraulic system, allowing system pump to prime itself. The valve will pass air or a small amount of oil with pump pressure below 50 psi (3.4 bar). Trapped air in the system is bled off back to the reservoir until a solid stream of hydraulic fluid at +50 psi (3.4 bar) closes the valve. This is automatic during every system start-up. The valve should be installed at the high point of the hydraulic system using a tee connection.

- For hydraulic applications only
- Removes air trapped in hydraulic system

**SPECIFICATIONS**

**Maximum Operating Pressure  
(Non-Shock Service)**

Carbon Steel: 5,000 psi (345 bar)

**Minimum Seating Pressure**

50 psi (3.4 bar)

**Operating Temperature Range (O-Ring)**

Buna N: -30° to +400° F (-34° to +204° C)

**Threads**

NPTF 1/4"

**Orifice Diameter**

.089 (2.3)

**Materials**

Body: Steel

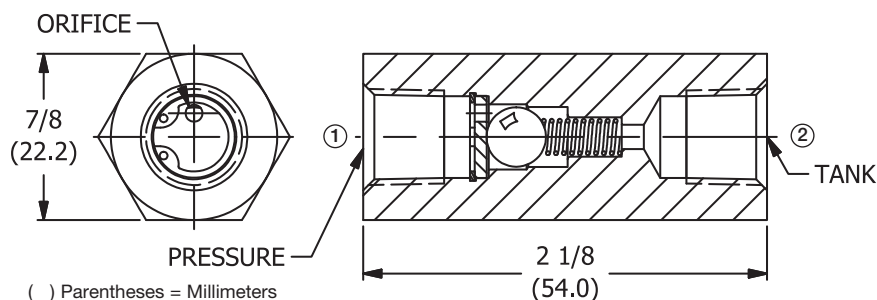
Spring: Stainless Steel 302

Ball: Stainless Steel 440

Washer: Steel

Retainer Ring: Steel

**INSTALLATION DIMENSIONS**



**HOW TO ORDER**

Size	NPTF Thread
	Steel
1/4"	AB20S