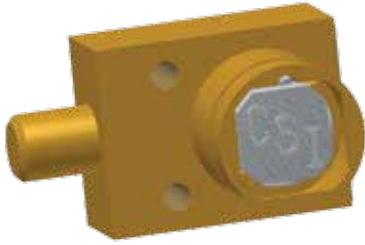


# Mechanical Isolation

## K - Bolt Interlock



- Key operated mechanical bolt interlock
- Designed for the control of electrical switchgear
- Comes with a 15.88 mm diameter bolt available in various lengths
- Available with FS or Q type lock portions
- Manufactured in either brass or stainless steel
- Ideal for use in standard or harsh, corrosive environments
- Shear force of bolt: 30KN (stainless steel) and 19KN (brass)

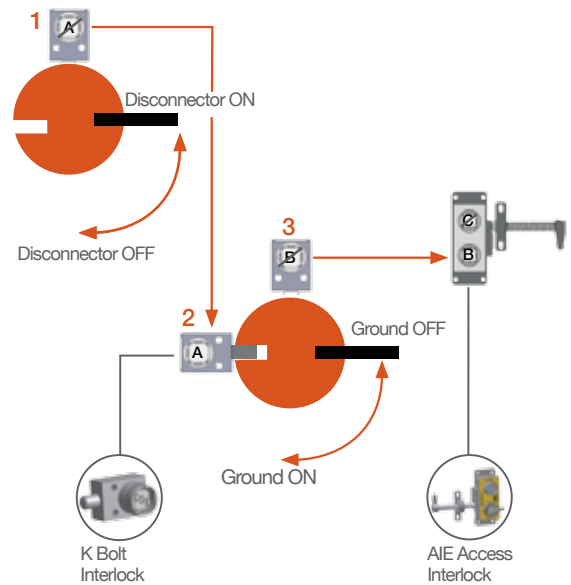
K-FSB-6.4-4

### Application

The K bolt interlocks are used as a part of a safety system to allow safe control of valves or disconnect switches.

While power supply to the system is switched on, the access doors to the hazardous area are locked closed. Key A is trapped in the disconnecter K bolt interlock (1) while the process is on. To enter the hazardous area, the disconnecter is turned to the OFF position and key A is released, locking the disconnecter in the disengaged position. Key A is then taken to the grounding switch. Key A enters the second K lock (2) which retracts the bolt enabling the cammed switch lever to be rotated to engage the ground. Once rotated, the recess in the cam aligns with the next K lock (3) with key B trapped in its lock. Key B can now be removed from K lock (3), which now locks the lever in place ensuring that the ground connection cannot be broken.

The system is now disconnected and grounded, key B can be taken to operate the access interlock on the door of the hazardous area to gain access into it.



### Order Information

	Product Type	1	2	3	4	5
Part Number	K					
Example	K	FS	B	6.4	4	TBA

1	Lock portion type	FS <sup>(1)</sup> / Q <sup>(1)</sup>
2	Material	B = Brass / S = Stainless steel
3	L Dimension (bolt length when retracted) in mm	0 / 6,4 / 12,7 / 19,1 / 25,4
4	Form	1 / 2 / 3 / 4 <sup>(1)</sup>
5	Lock portion symbol	FS <sup>(1)</sup> up to 3 characters / Q <sup>(1)</sup> up to 6 characters

<sup>(1)</sup> Please see our glossary on pages 66-67 for more information



Pneutrol International Limited  
 UK Office  
 5 Caulside Drive, Antrim, BT41 2DU  
 United Kingdom  
 TEL: +44 (0) 28 9448 1800  
 www.pneutrol.com/industrialspares

sales@pneutrol.com  
 European Office  
 Unit 6, Saint Anthony's Business Park, Ballymount Road, D22 VW95  
 Ireland  
 TEL: +353 (0) 1 4373653  
 www.pneutrol.com/industrialspares