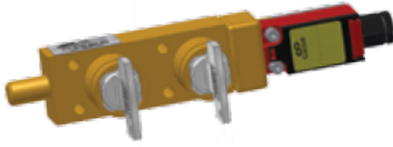


KLP - Multi Key Bolt Interlock with Safety Switch



KLP1-FSB-1S-0-FR-4-E

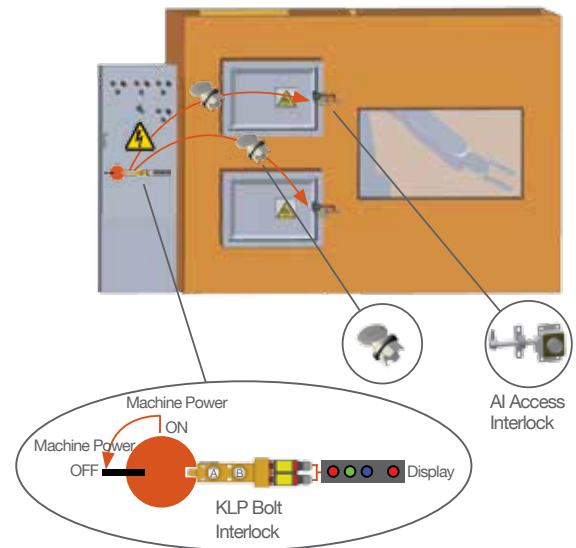
- Key operated mechanical bolt interlock
- Complete with position monitoring electrical contacts
- Designed for the control of electrical switchgear or valves
- Comes with a 15,88 mm diameter bolt of variable lengths
- Comes with 2N/C 1N/O 10 A contacts (KP1) or 4N/C 2N/O 10 A contacts (KP2)
- Available with FS or Q type lock portions
- Manufactured in either brass or stainless steel
- Ideal for use in standard or harsh, corrosive environments
- Available in a double key or exchange key condition
- Shear force of bolt: 30KN (stainless steel) and 19KN (brass)

Application

KLP bolt interlocks with safety switches are used as a part of a safety system, typically in switchgear applications.

The electrical supply of the machine is on, and the protective doors to the hazardous area are locked. Both keys are trapped in the KLP unit. Before entering the machine area the disconnecter lever needs to be rotated to isolate the power to the machine. To lock the disconnecter lever in the safe position both keys in the KLP bolt interlock need to be released. This extends the bolt of the KLP, locks it in the extended position and changes the contacts in the KLP switch. This is connected to a traffic light or another display, indicating the access to machine area can be gained.

The removed keys are taken to the AI access interlocks to open the doors. The power supply cannot be switched back on while the keys are trapped in the access interlocks.



Order Information

	Product Type	1	2	3	4	5	6	7	8	9
Part Number	KLP									
Example	KLP	1	FS	B	1S	0	FR	4	E	TBA

1	Switch specification	1 = 2NC/1NO (1 switch) 2 = 4NC/2NO (2 switches)
2	Lock portion type	FS ⁽¹⁾ / Q ⁽¹⁾
3	Material	B = Brass / S = Stainless steel
4	Secondary lock portion(s)	1S / 2S / 3S = 1 / 2 or 3 secondary lock portions respectively
5	L Dimension (bolt length when retracted) in mm	0 / 6,4 / 12,7 / 19,1 / 25,4 ⁽¹⁾
6	Switch entry	RE = Rear entry / FR = Front entry ⁽¹⁾
7	Form	1 / 2 / 3 / 4 ⁽¹⁾
8	Key Condition	D = Double key condition (both keys are trapped or free)/ E = Exchange key condition (primary key is trapped while bolt is extended, secondary key is free)
9	Lock portion symbol: Please advise for each lock as for primary and secondary ⁽²⁾ locks separately	FS ⁽¹⁾ up to 3 characters / Q ⁽¹⁾ up to 6 characters