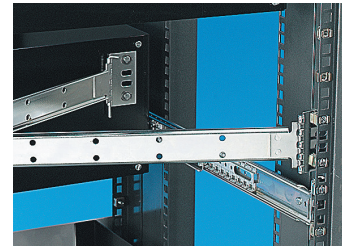


## Guide-câbles Kabelträger

- Broad and narrow cable management arms
- Concertina open/close
- Suitable for 2U high units and above
- Easy disconnect from chassis

- Bras larges ou étroits pour agencement de câbles
- En accordéon ouvert/fermé
- Convient aux ensembles de 2 U de haut et plus
- Déconnexion facile du châssis

- Breite und schmale Kabelführungsarme
- Ziehharmonika-artiges Öffnen/Schließen
- Geeignet für 2 HE und darüber
- Einfache Trennung vom Chassis



### CC11-AD

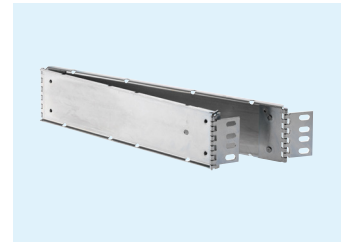
- Cable carrying widths: 72mm
- Weight per unit: 0.93kg
- Order code: DZCC11-AD

### CC11-AD

- Largeur des guide-câbles: 72mm
- Poids par unité: 0,93kg
- Code de commande: DZCC11-AD

### CC11-AD

- Kabelführungsbreiten: 72mm
- Gewicht pro Einheit: 0,93kg
- Bestellnummern: DZCC11-AD



### CC5AD

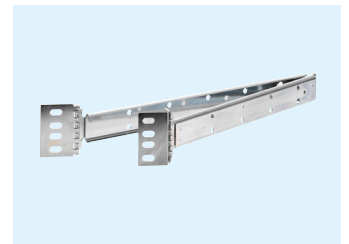
- Cable carrying widths: 31mm
- Weight per unit: 0.47kg
- Order code: DZCC5AD

### CC5AD

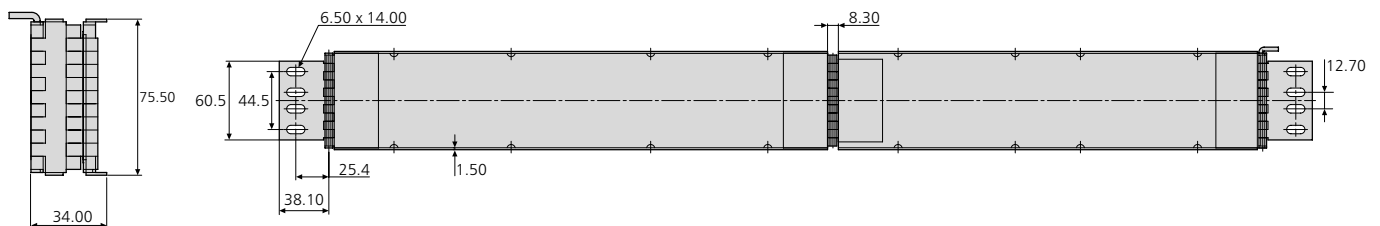
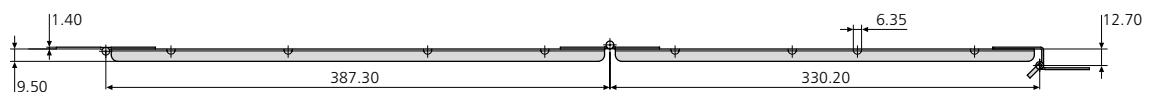
- Largeur des guide-câbles: 31mm
- Poids par unité: 0,47kg
- Code de commande: DZCC5AD

### CC5AD

- Kabelführungsbreiten: 31mm
- Gewicht pro Einheit: 0,47kg
- Bestellnummern: DZCC5AD



### CC11-AD

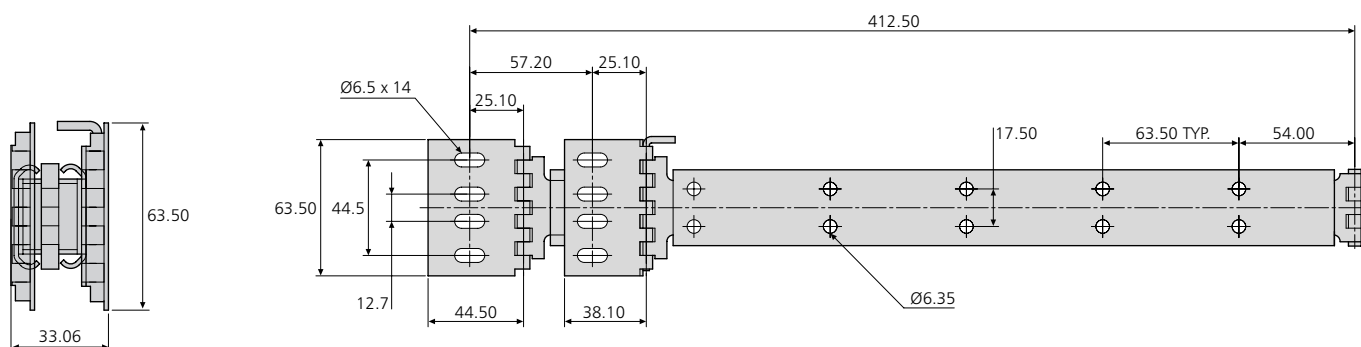
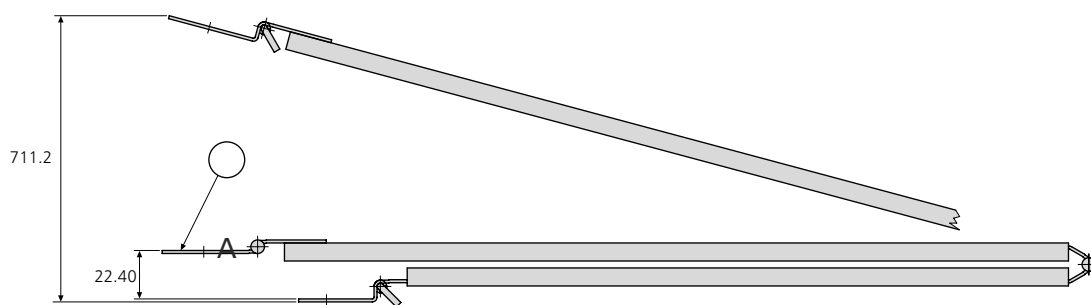


PNEUTROL INTERNATIONAL LIMITED  
sales@pneutrol.com

UK OFFICE:  
5 CAULSIDE DRIVE, ANTRIM, BT41 2DU, NORTHERN IRELAND  
TEL: + 44 (0) 28 9448 1800, www.pneutrol.com/industrialspares

EUROPEAN OFFICE:  
UNIT 6, ST ANTHONY'S BUSINESS PARK DUBLIN, D22 VW95, IRELAND,  
TEL: +353 (1) 437 3653, www.pneutrol.com/industrialspares

### CC5AD



#### Notes:

- Not suitable for slides over 700mm in length
- 2 fixing holes used on each end of bracket is recommended
- Please refer to 2D CAD drawings for dimensional tolerances

A= Cabinet hinge

#### Notes:

- Ne convient pas aux glissières de plus de 700mm de longueur
- Il est recommandé d'utiliser 2 trous de fixation sur chaque charnière
- Pour les tolérances dimensionnelles, veuillez vous reporter à nos plans 2D

A= Charnière côté armoire

#### Hinweise:

- Für Schienen über 700mm Länge ungeeignet
- Mindestens 2 Befestigungslöcher an jedem Winkelende verwenden
- Bitte beachten Sie die 2D-CAD-Zeichnung wegen Abmessungstoleranzen

A= Schrankcharnier